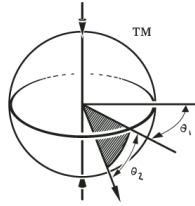




Polar[®] Focus



Audio Rigging Products

Polar Focus[®] Rigging Configuration Guide for EAW QX Series

This document shows samples of Polar Focus rigging for EAW QX series speaker configurations with common roof attachment methods. It is not intended to be all inclusive. We have many more standard roof attachment and cluster configurations. If your specific speaker configuration or roof attachment requirement is not shown, please call us, so we can create a rigging package for your unique application.

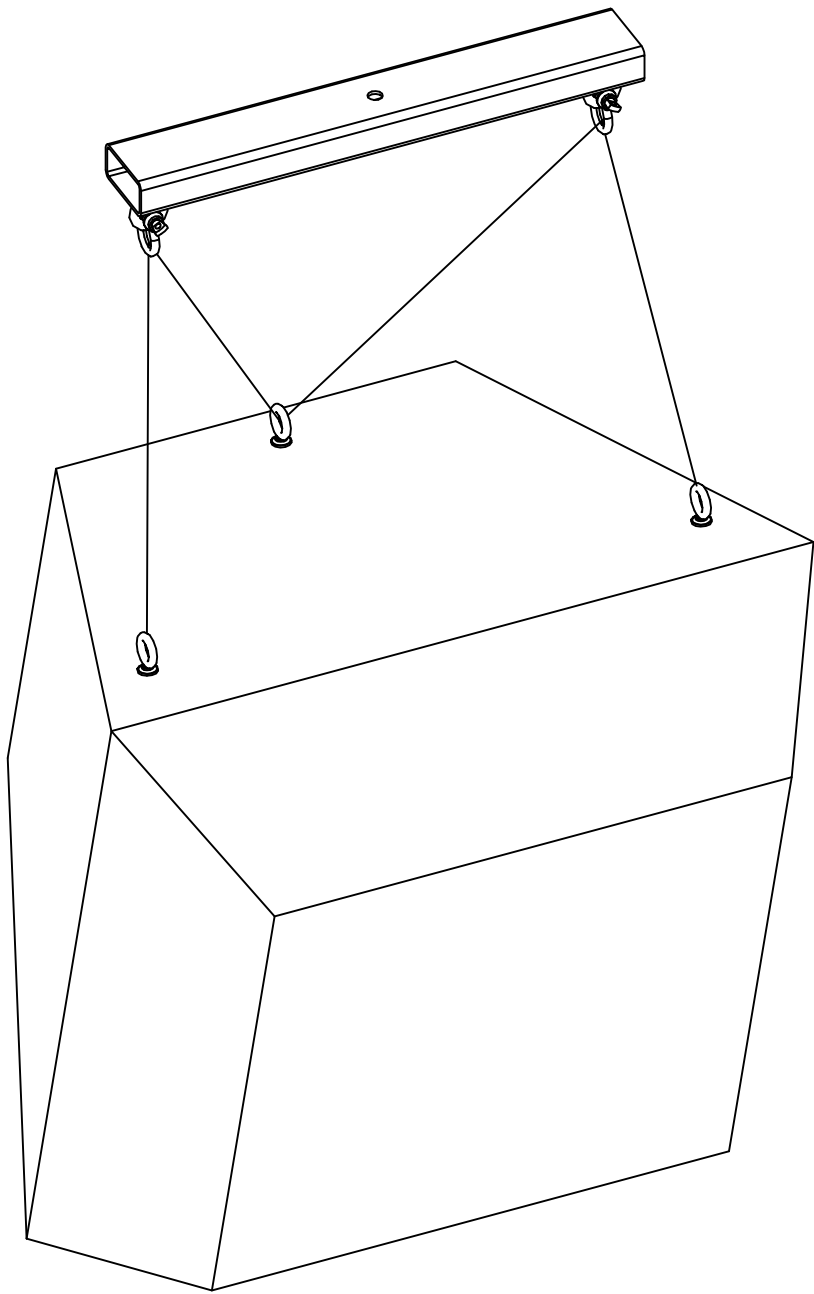
These drawings are for conversation only. Any rigging project must be confirmed for safety and correct technical fulfillment of an audio design.

At Polar Focus, we have a wide range of rigging products to support any of your pro audio needs. Indoors or outdoors, permanent or temporary; we do it all! Please visit our website at www.polar-focus.com to see some of our great rigging products and sign up for our newsletter, or give us a call to see how we can assist you on your upcoming rigging projects. Pro audio rigging design, roof attachment, supplemental structure, sales, support and PE stamped drawings in any US State provided by Polar Focus. Call us today for more information at (413) 586-4444.

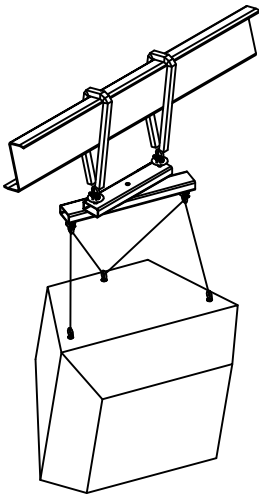
Table of Contents:

1. Single Speaker From a Tilt Cable Kit
2. 1 Over 1 Using EAW U-Brackets With Mechanical Time Alignment
3. 1 Over 1 Using Tilt Cable Kits With Mechanical Time Alignment
4. 1 Over 1 Using Tilt Cable Kits, With QX118, With Mechanical Time Alignment
5. 1 Over 1 Using EAW U-Brackets, With QX118, With Mechanical Time Alignment
6. Side-By-Side Using Tilt Cable Kits
7. Side-By-Side Using EAW U-Brackets
8. 1 Over 1 Using EAW U-Brackets With No Mechanical Time Alignment
9. 1 Over 1 Using Tilt Cable Kits With No Mechanical Time Alignment

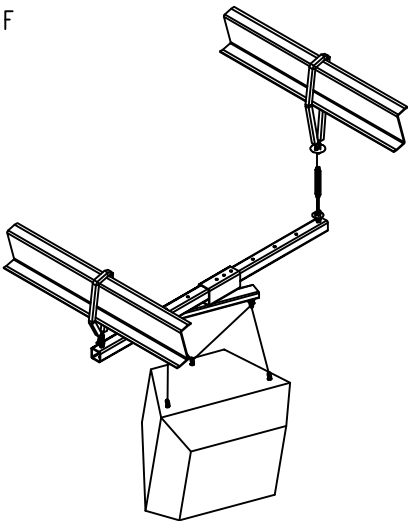
SINGLE QX 5XX SERIES SPEAKER WITH ZBEAM HALF AND TILT CABLE KIT



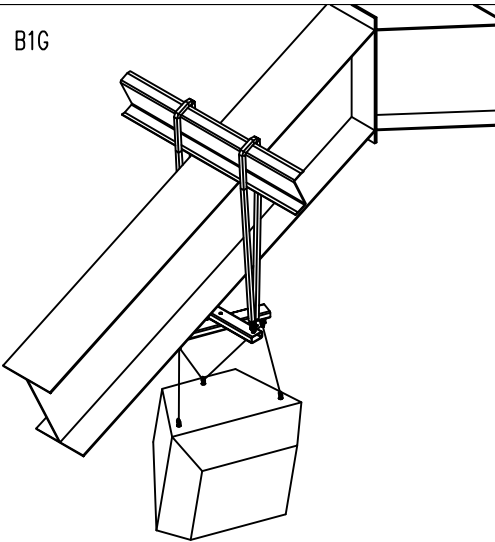
B1C



B1F



B1G



- NOTES:
1. THIS DOCUMENT SHOWS A SAMPLE OF SOME COMMON RIGGING METHODS POLAR FOCUS CAN PROVIDE FOR YOUR EAW QX SERIES SPEAKERS. THIS IS ONLY A SUBSET OF STANDARD ROOF ATTACHMENT TECHNIQUES; IF YOU DO NOT SEE THE RIGGING CONFIGURATION THAT YOU NEED, PLEASE DO NOT HESITATE TO CALL US; WE EXCEL IN DESIGNING CUSTOM RIGGING FOR ANY SITUATION!
 2. POLAR FOCUS CAN PROVIDE P.E. STAMPED DRAWINGS IN ALL 50 STATES FOR OUR DESIGN WORK.

COPYRIGHT © 2015 Polar Focus, Inc.
POLAR FOCUS® is a Registered Trademark of Polar Focus, Inc.

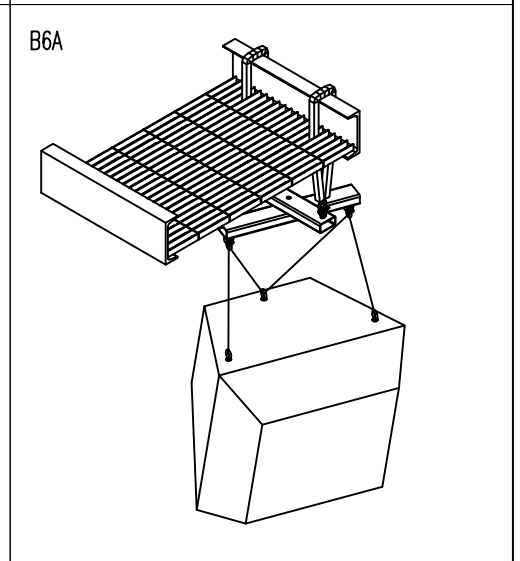
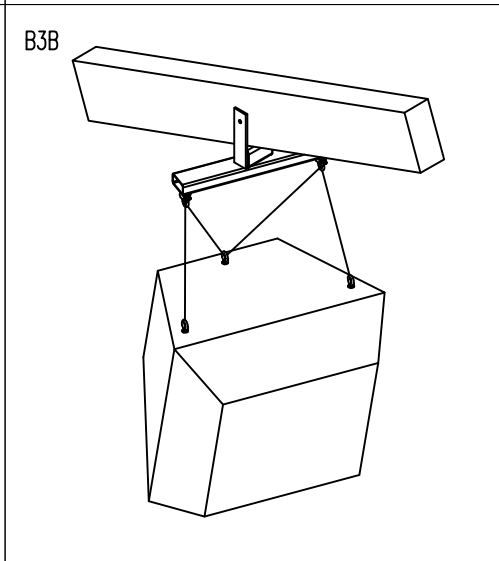
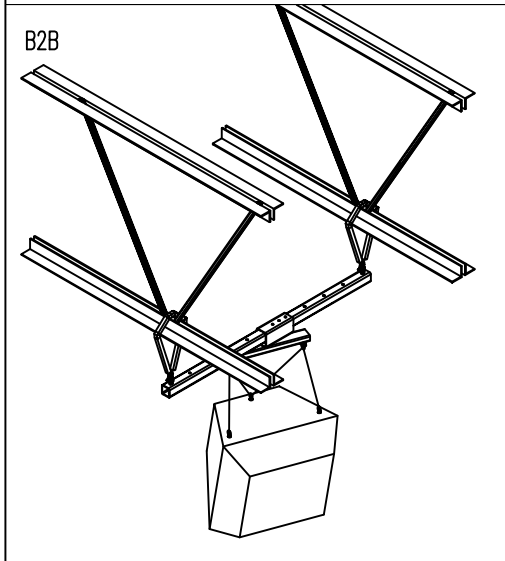
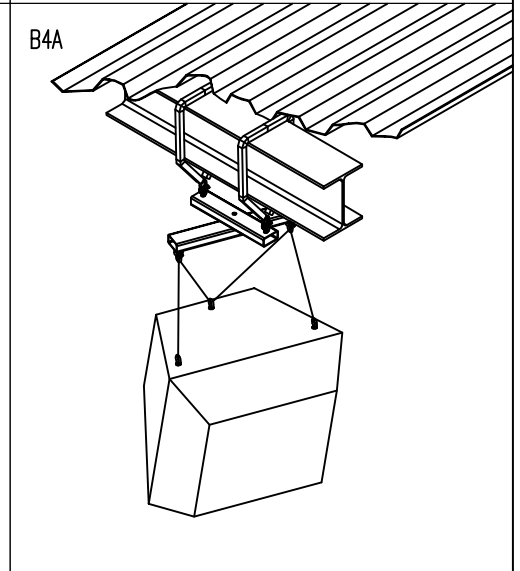
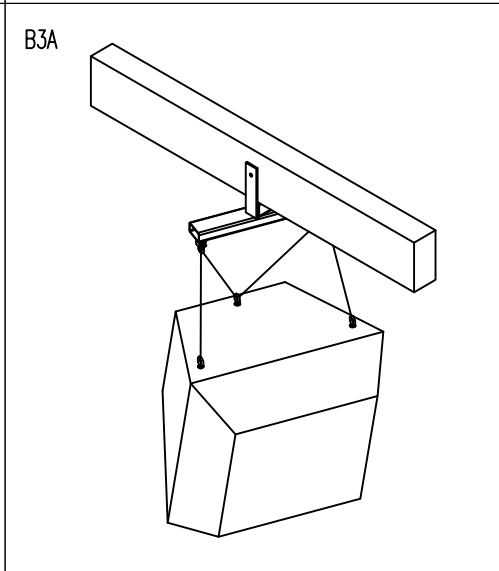
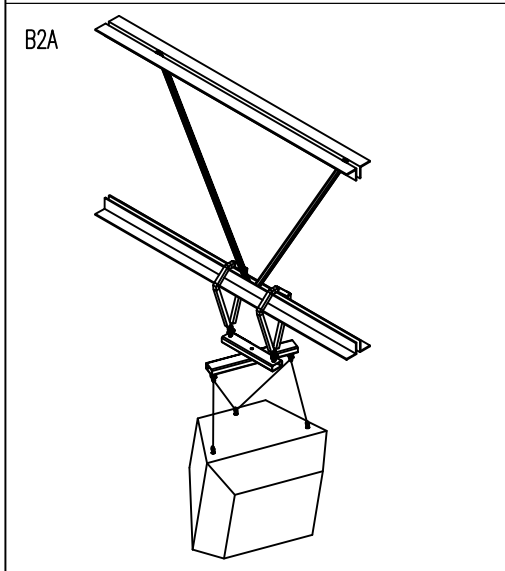
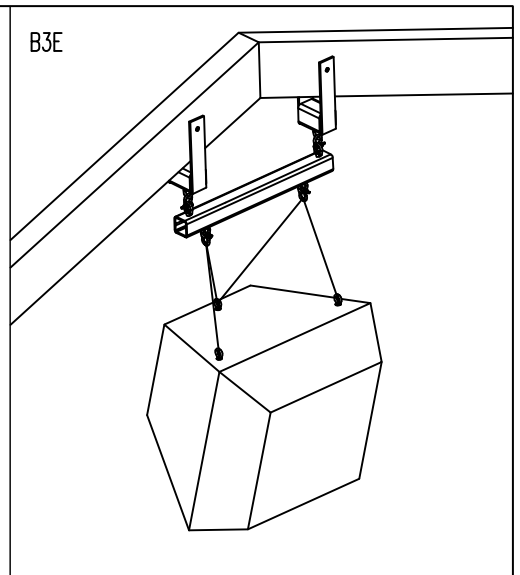
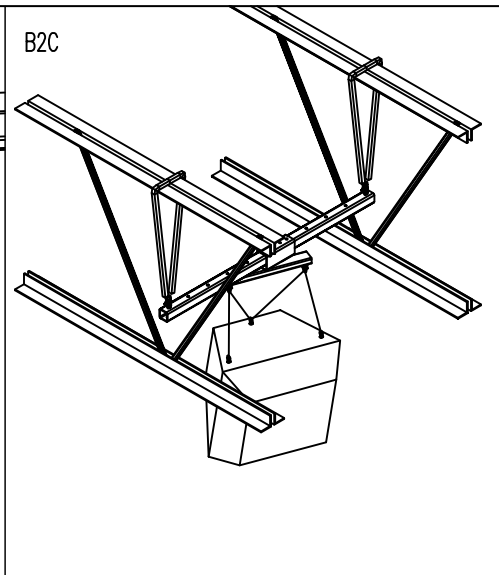
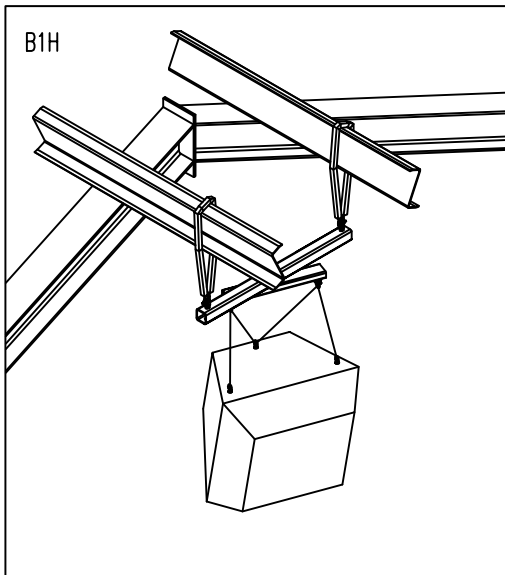
Polar Focus, Inc.
20 Industrial Dr. E., Unit 2
South Deerfield, MA 01373
413-586-4444
www.polarfocus.com

DRAWN BY:
Matt Shutta May-19-2015
SCALE: n/a

Submittal H8036-1:
EAW QX Series; Single Box

SAMPLE RIGGING CONFIGURATIONS

FILE:	H8036-1.dwg
DWG. NO.	H8036-1S-001
REV	SIZE A SHEET 1 of 2



NOTES:

1. THIS DOCUMENT SHOWS A SAMPLE OF SOME COMMON RIGGING METHODS POLAR FOCUS CAN PROVIDE FOR YOUR EAW QX SERIES SPEAKERS. THIS IS ONLY A SUBSET OF STANDARD ROOF ATTACHMENT TECHNIQUES; IF YOU DO NOT SEE THE RIGGING CONFIGURATION THAT YOU NEED, PLEASE DO NOT HESITATE TO CALL US; WE EXCEL IN DESIGNING CUSTOM RIGGING FOR ANY SITUATION!
2. POLAR FOCUS CAN PROVIDE P.E. STAMPED DRAWINGS IN ALL 50 STATES FOR OUR DESIGN WORK.

Polar Focus, Inc.
20 Industrial Dr. E., Unit 2
South Deerfield, MA 01373
413-586-4444
www.polarfocus.com

DRAWN BY:
Matt Shutta May-19-2015

SCALE: per panel

Submittal H8036-1:
EAW QX Series; Single Box

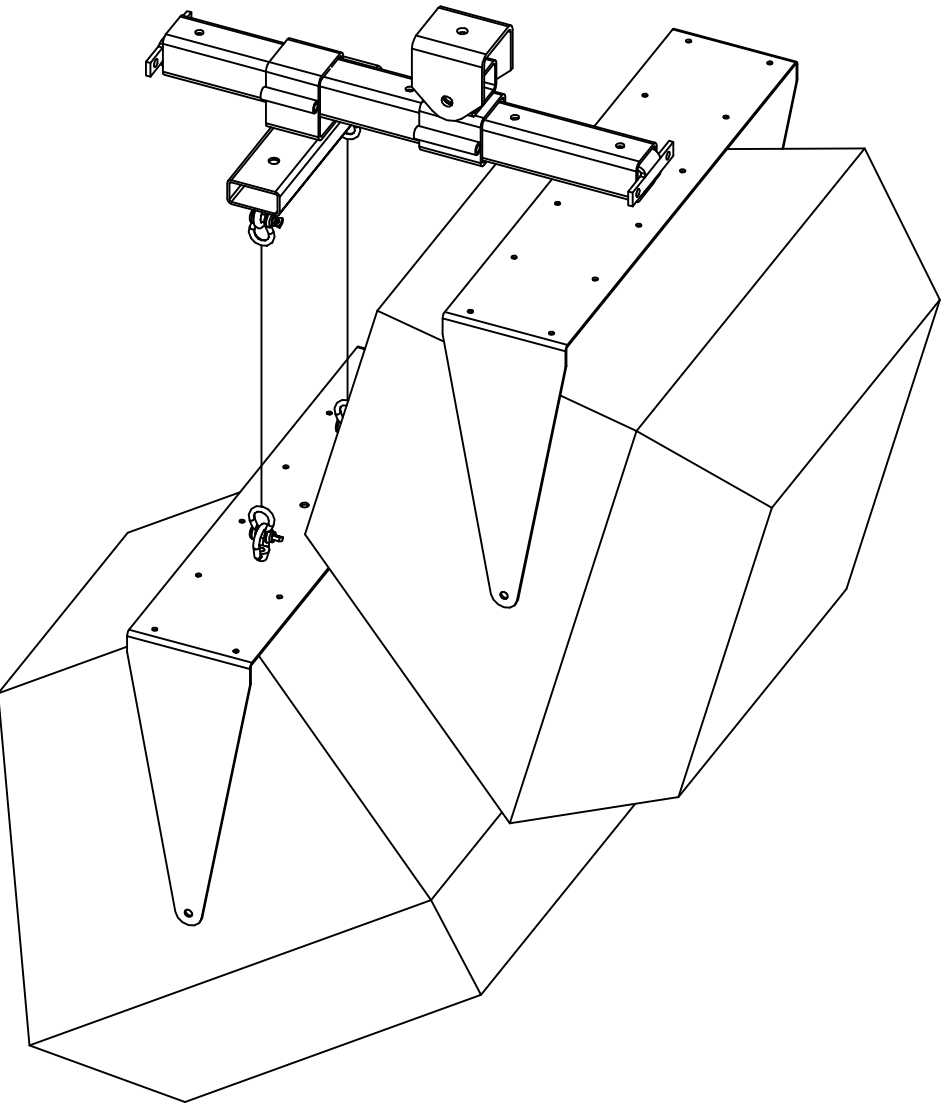
Four Views

FILE: H8036-1.dwg

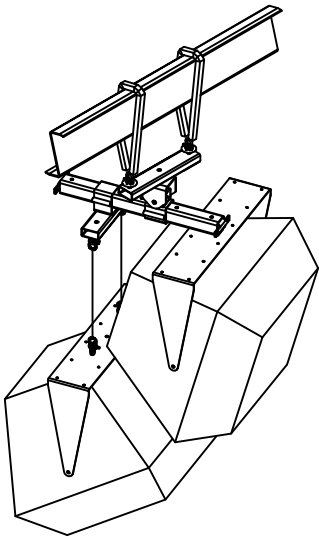
DWG. NO. H8036-1S-002

REV SIZE A SHEET 2 of 2

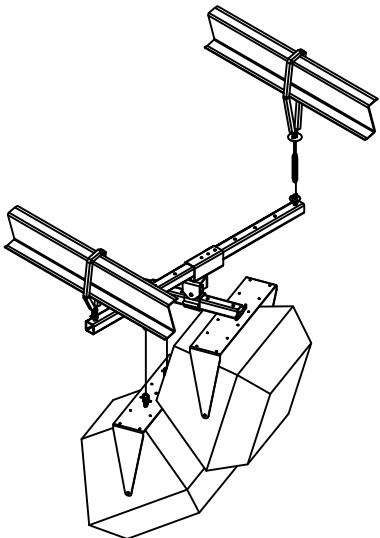
2 QX 5XX SERIES SPEAKERS ONE OVER ANOTHER, WITH EAW U-BRACKETS & MECHANICAL TIME ALIGNMENT



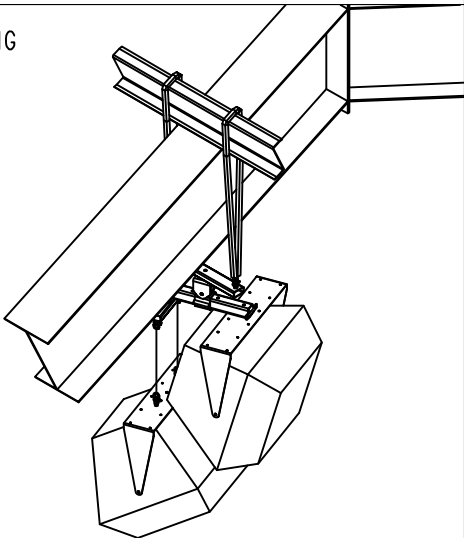
B1C



B1F



B1G



NOTES:
1. THIS DOCUMENT SHOWS A SAMPLE OF SOME COMMON RIGGING METHODS POLAR FOCUS CAN PROVIDE FOR YOUR EAW QX SERIES SPEAKERS. THIS IS ONLY A SUBSET OF STANDARD ROOF ATTACHMENT TECHNIQUES; IF YOU DO NOT SEE THE RIGGING CONFIGURATION THAT YOU NEED, PLEASE DO NOT HESITATE TO CALL US; WE EXCEL IN DESIGNING CUSTOM RIGGING FOR ANY SITUATION!
2. POLAR FOCUS CAN PROVIDE P.E. STAMPED DRAWINGS IN ALL 50 STATES FOR OUR DESIGN WORK.

COPYRIGHT © 2015 Polar Focus, Inc.
POLAR FOCUS® is a Registered Trademark of Polar Focus, Inc.

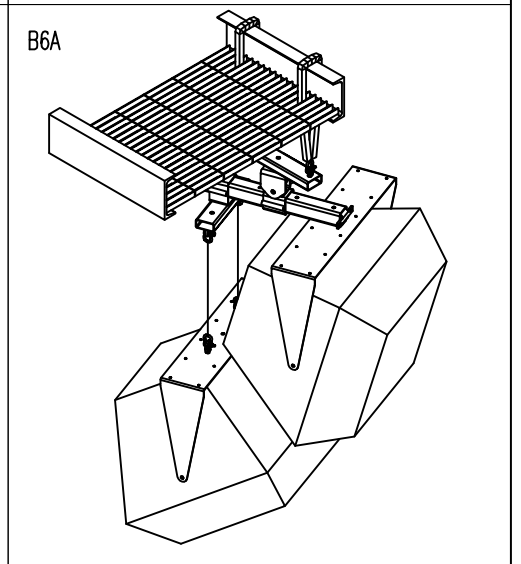
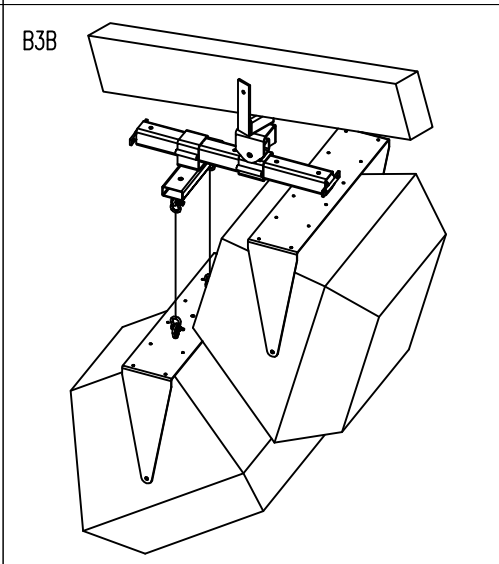
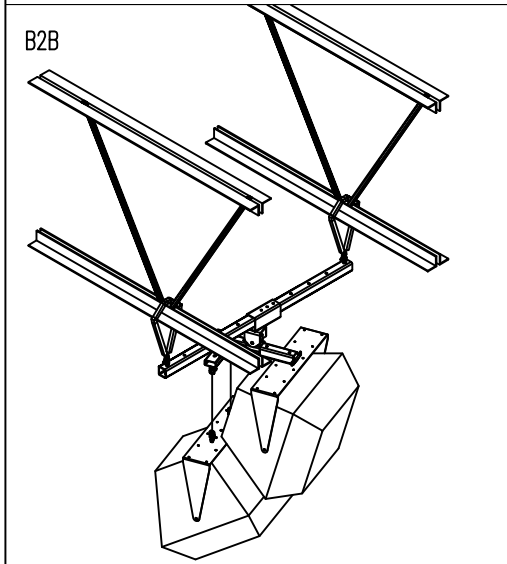
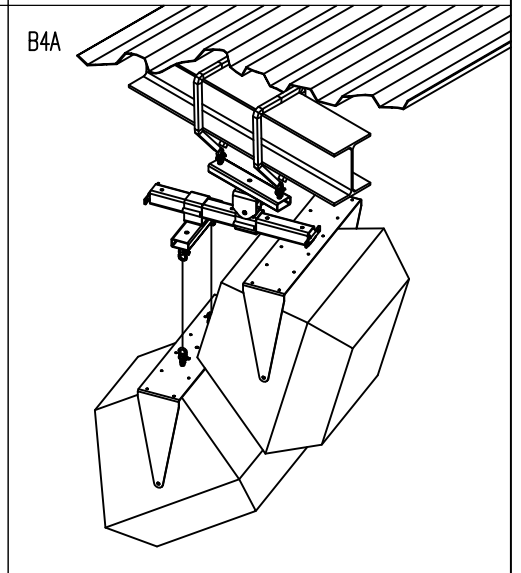
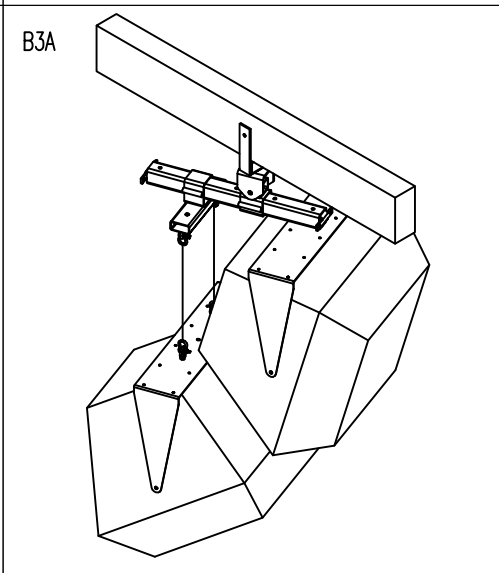
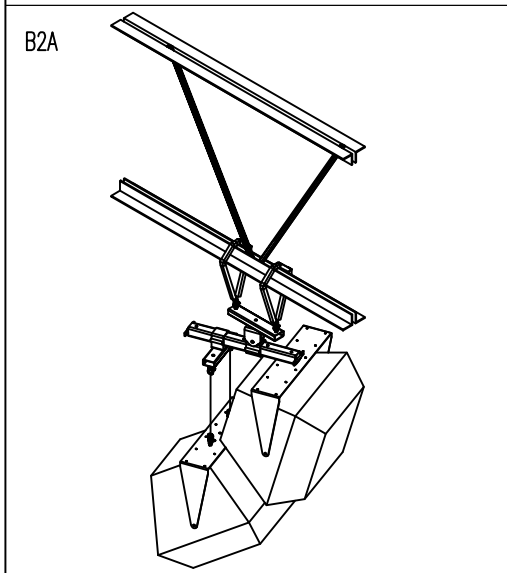
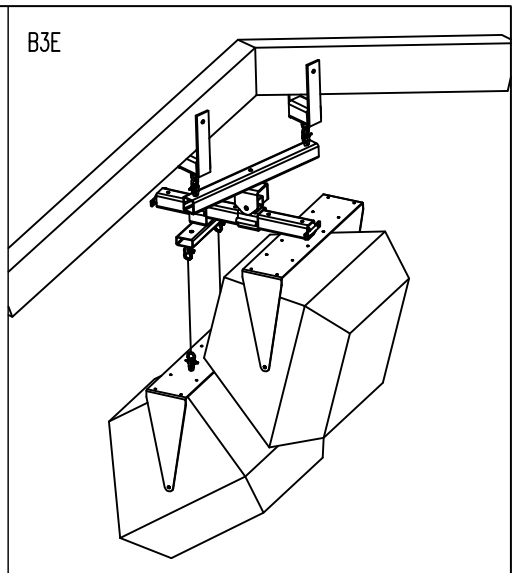
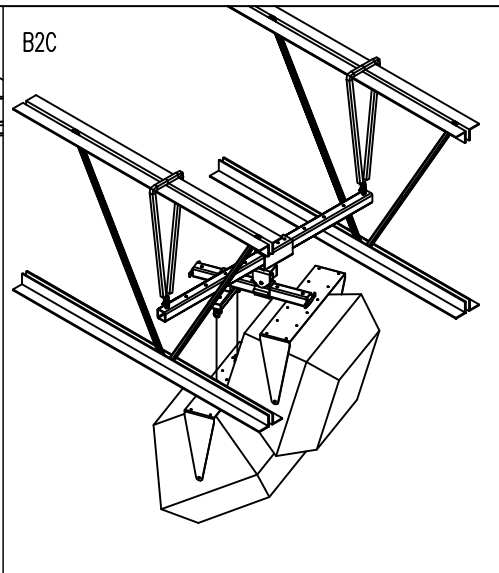
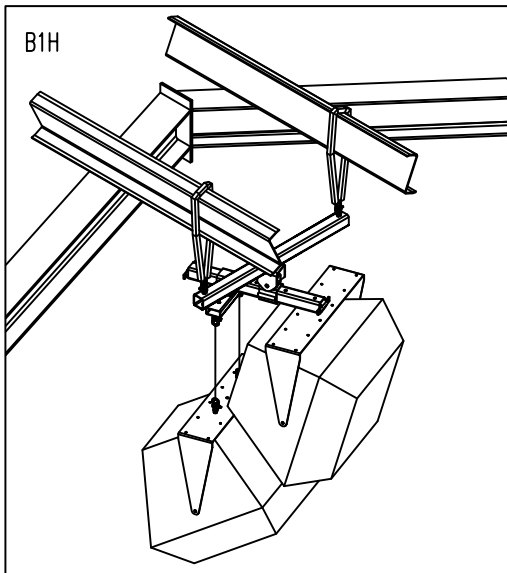
Polar Focus, Inc.
20 Industrial Dr. E., Unit 2
South Deerfield, MA 01373
413-586-4444
www.polarfocus.com

DRAWN BY:
Matt Shutta May-19-2015
SCALE: n/a

Submittal H8036-2:
EAW QX Series; 1 Over 1, U-Bracket, TA

SAMPLE RIGGING CONFIGURATIONS

FILE:	H8036-2.dwg
DWG. NO.	H8036-2 S-001
REV	SIZE A SHEET 1 of 2



NOTES:

1. THIS DOCUMENT SHOWS A SAMPLE OF SOME COMMON RIGGING METHODS POLAR FOCUS CAN PROVIDE FOR YOUR EAW QX SERIES SPEAKERS. THIS IS ONLY A SUBSET OF STANDARD ROOF ATTACHMENT TECHNIQUES; IF YOU DO NOT SEE THE RIGGING CONFIGURATION THAT YOU NEED, PLEASE DO NOT HESITATE TO CALL US; WE EXCEL IN DESIGNING CUSTOM RIGGING FOR ANY SITUATION!
2. POLAR FOCUS CAN PROVIDE P.E. STAMPED DRAWINGS IN ALL 50 STATES FOR OUR DESIGN WORK.

Polar Focus, Inc.
20 Industrial Dr. E., Unit 2
South Deerfield, MA 01373
413-586-4444
www.polarfocus.com

DRAWN BY:
Matt Shutta May-19-2015

SCALE: per panel

Submittal H8036-2:
EAW QX Series; 1 Over 1, U-Bracket, TA

Four Views

FILE:

H8036-2.dwg

DWG. NO.

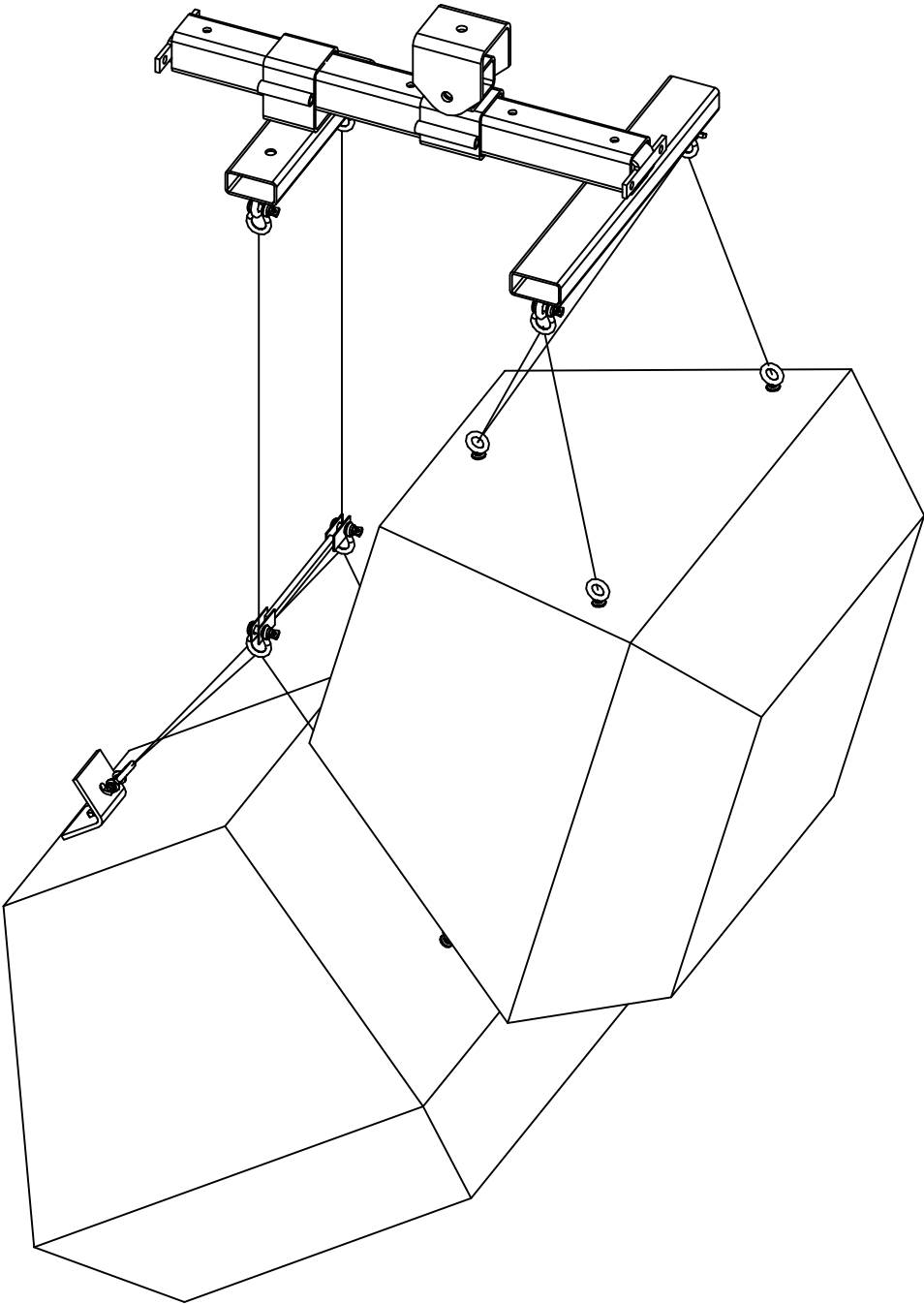
H8036-2 S-002

REV

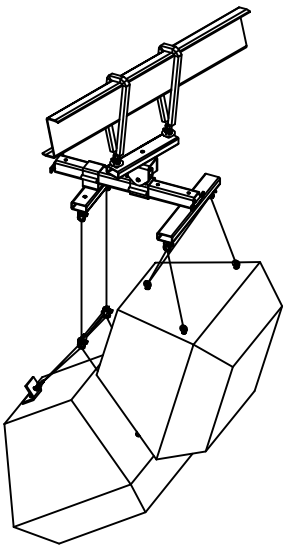
SIZE A

SHEET 2 of 2

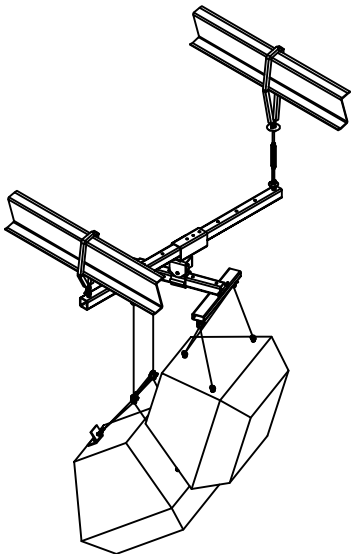
2 QX 5XX SERIES SPEAKERS ONE OVER ANOTHER, WITH TILT CABLE KITS & MECHANICAL TIME ALIGNMENT



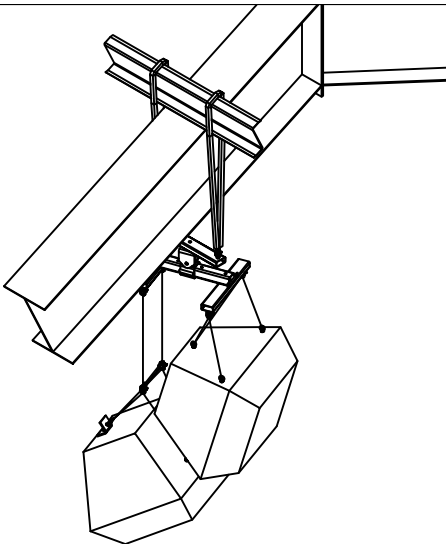
B1C



B1F



B1G



NOTES:
1. THIS DOCUMENT SHOWS A SAMPLE OF SOME COMMON RIGGING METHODS POLAR FOCUS CAN PROVIDE FOR YOUR EAW QX SERIES SPEAKERS. THIS IS ONLY A SUBSET OF STANDARD ROOF ATTACHMENT TECHNIQUES; IF YOU DO NOT SEE THE RIGGING CONFIGURATION THAT YOU NEED, PLEASE DO NOT HESITATE TO CALL US; WE EXCEL IN DESIGNING CUSTOM RIGGING FOR ANY SITUATION!
2. POLAR FOCUS CAN PROVIDE P.E. STAMPED DRAWINGS IN ALL 50 STATES FOR OUR DESIGN WORK.

COPYRIGHT © 2015 Polar Focus, Inc.
POLAR FOCUS® is a Registered Trademark of Polar Focus, Inc.

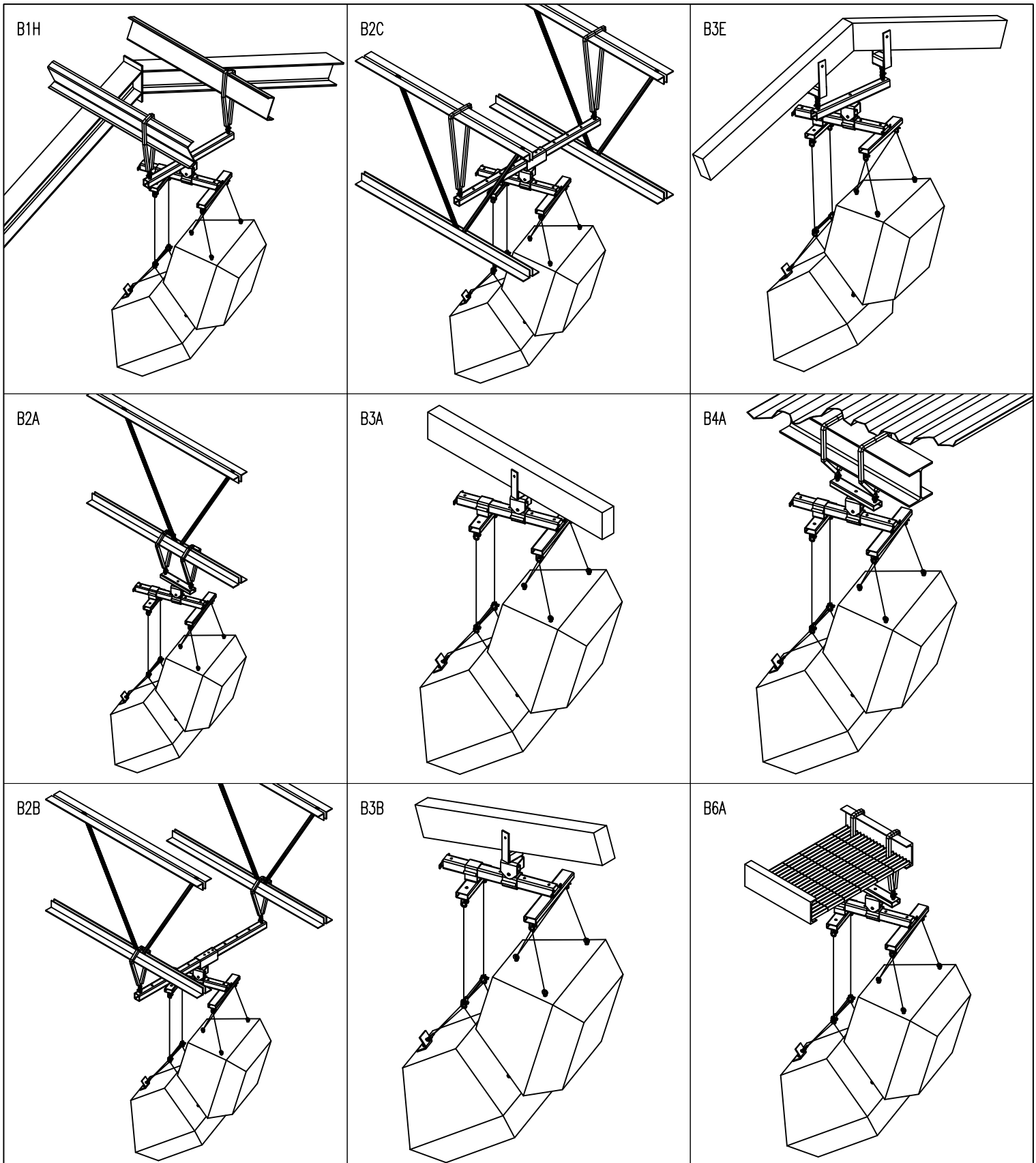
Polar Focus, Inc.
20 Industrial Dr. E., Unit 2
South Deerfield, MA 01373
413-586-4444
www.polarfocus.com

DRAWN BY:
Matt Shutta May-19-2015
SCALE: n/a

Submittal H8036-3:
EAW QX Series; 1 Over 1, Tilt Cable Kit, TA

SAMPLE RIGGING CONFIGURATIONS

FILE:	H8036-3.dwg
DWG. NO.	H8036-3 S-001
REV	SIZE A SHEET 1 of 2



NOTES:

1. THIS DOCUMENT SHOWS A SAMPLE OF SOME COMMON RIGGING METHODS POLAR FOCUS CAN PROVIDE FOR YOUR EAW QX SERIES SPEAKERS. THIS IS ONLY A SUBSET OF STANDARD ROOF ATTACHMENT TECHNIQUES; IF YOU DO NOT SEE THE RIGGING CONFIGURATION THAT YOU NEED, PLEASE DO NOT HESITATE TO CALL US; WE EXCEL IN DESIGNING CUSTOM RIGGING FOR ANY SITUATION!
2. POLAR FOCUS CAN PROVIDE P.E. STAMPED DRAWINGS IN ALL 50 STATES FOR OUR DESIGN WORK.

Polar Focus, Inc.
20 Industrial Dr. E., Unit 2
South Deerfield, MA 01373
413-586-4444
www.polarfocus.com

DRAWN BY:
Matt Shutta May-19-2015

SCALE: per panel

Submittal H8036-3:
EAW QX Series; 1 Over 1, Tilt Cable Kit, TA

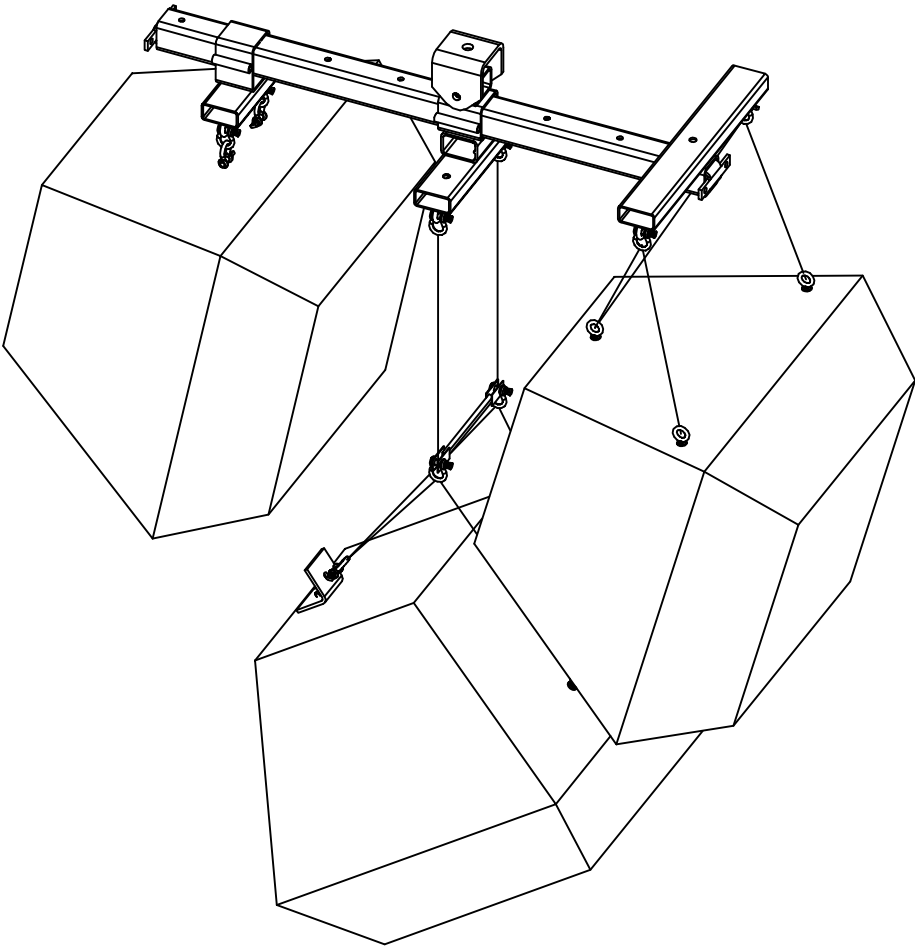
Four Views

FILE: H8036-3.dwg

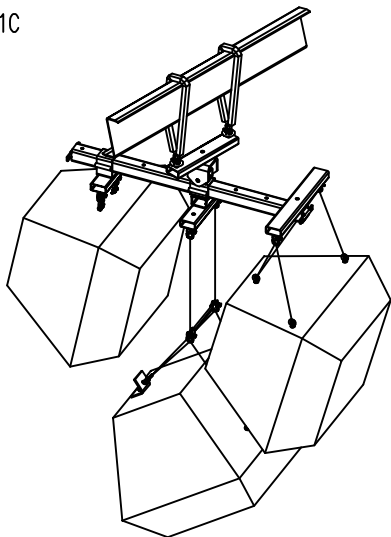
DWG. NO. H8036-3 S-002

REV SIZE A SHEET 2 of 2

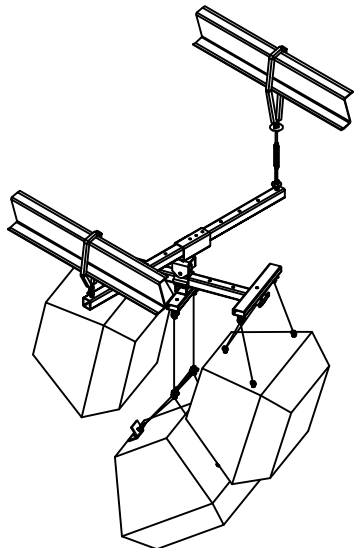
2 QX 5XX SERIES SPEAKERS ONE OVER ANOTHER WITH QX118 BEHIND; WITH TILT CABLE KITS & MECHANICAL TIME ALIGNMENT



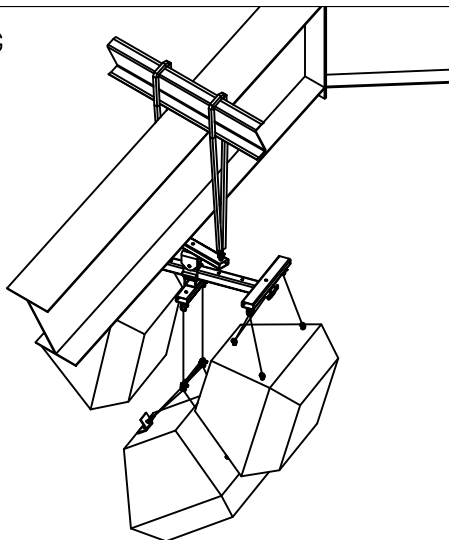
B1C



B1F



B1G



- NOTES:
1. THIS DOCUMENT SHOWS A SAMPLE OF SOME COMMON RIGGING METHODS POLAR FOCUS CAN PROVIDE FOR YOUR EAW QX SERIES SPEAKERS. THIS IS ONLY A SUBSET OF STANDARD ROOF ATTACHMENT TECHNIQUES; IF YOU DO NOT SEE THE RIGGING CONFIGURATION THAT YOU NEED, PLEASE DO NOT HESITATE TO CALL US; WE EXCEL IN DESIGNING CUSTOM RIGGING FOR ANY SITUATION!
 2. POLAR FOCUS CAN PROVIDE P.E. STAMPED DRAWINGS IN ALL 50 STATES FOR OUR DESIGN WORK.

COPYRIGHT © 2015 Polar Focus, Inc.
POLAR FOCUS® is a Registered Trademark of Polar Focus, Inc.

Polar Focus, Inc.
20 Industrial Dr. E., Unit 2
South Deerfield, MA 01373
413-586-4444
www.polarfocus.com

DRAWN BY:
Matt Shutta May-19-2015

SCALE: n/a

Submittal H8036-4:
EAW QX Series; 1 Over 1, Sub Behind, Tilt Cable Kit, TA

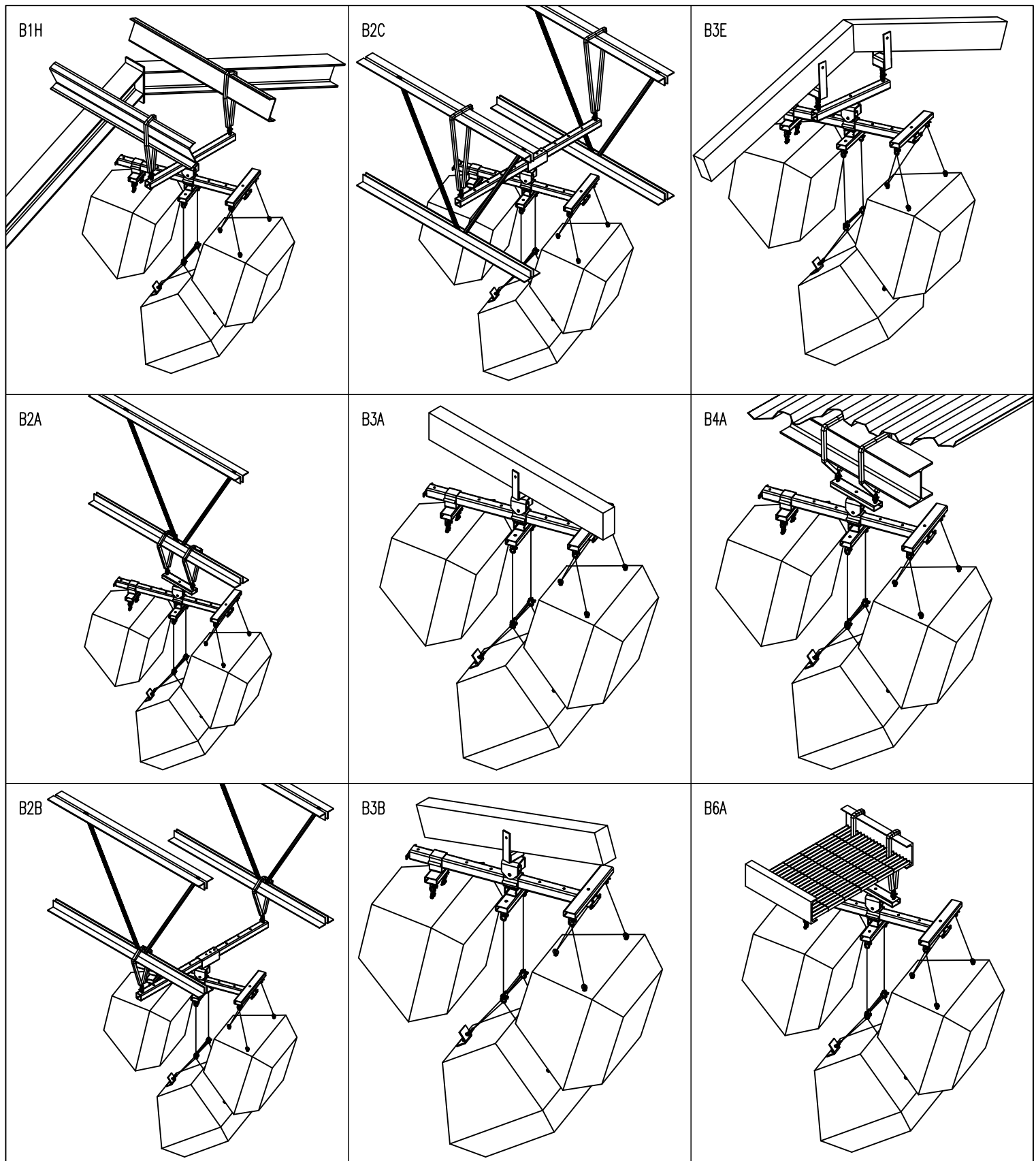
SAMPLE RIGGING CONFIGURATIONS

FILE: H8036-4.dwg

DWG. NO. H8036-4 S-001

REV

SIZE A SHEET 1 of 2



NOTES:

1. THIS DOCUMENT SHOWS A SAMPLE OF SOME COMMON RIGGING METHODS POLAR FOCUS CAN PROVIDE FOR YOUR EAW QX SERIES SPEAKERS. THIS IS ONLY A SUBSET OF STANDARD ROOF ATTACHMENT TECHNIQUES; IF YOU DO NOT SEE THE RIGGING CONFIGURATION THAT YOU NEED, PLEASE DO NOT HESITATE TO CALL US; WE EXCEL IN DESIGNING CUSTOM RIGGING FOR ANY SITUATION!
2. POLAR FOCUS CAN PROVIDE P.E. STAMPED DRAWINGS IN ALL 50 STATES FOR OUR DESIGN WORK.

Polar Focus, Inc.
20 Industrial Dr. E., Unit 2
South Deerfield, MA 01373
413-586-4444
www.polarfocus.com

DRAWN BY:
Matt Shutta May-19-2015

SCALE: per panel

Submittal H8036-4:

EAW QX Series; 1 Over 1, Sub Behind, Tilt Cable Kit, TA

Four Views

FILE:

H8036-4.dwg

DWG. NO.

H8036-4 S-002

REV

SIZE A

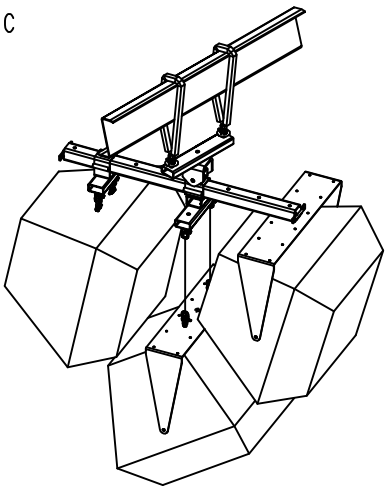
SHEET 2 of 2

COPYRIGHT © 2015 Polar Focus, Inc.

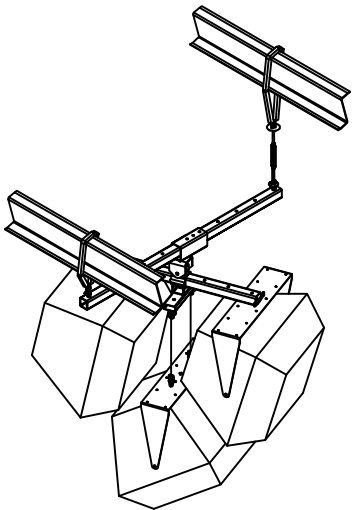
POLAR FOCUS® is a Registered Trademark of Polar Focus, Inc.

2 QX 5XX SERIES SPEAKERS ONE OVER ANOTHER WITH EAW U-BRACKETS, QX118 BEHIND, & MECHANICAL TIME ALIGNMENT

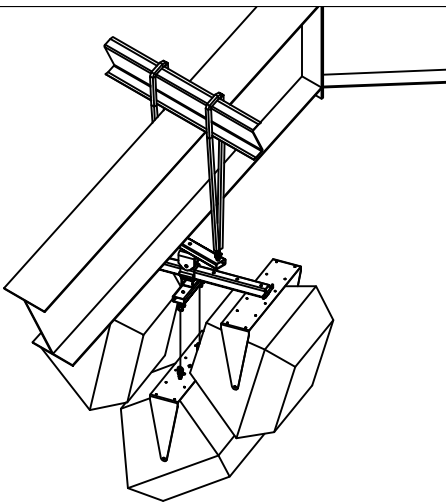
B1C



B1F



B1G



NOTES:
1. THIS DOCUMENT SHOWS A SAMPLE OF SOME COMMON RIGGING METHODS POLAR FOCUS CAN PROVIDE FOR YOUR EAW QX SERIES SPEAKERS. THIS IS ONLY A SUBSET OF STANDARD ROOF ATTACHMENT TECHNIQUES; IF YOU DO NOT SEE THE RIGGING CONFIGURATION THAT YOU NEED, PLEASE DO NOT HESITATE TO CALL US; WE EXCEL IN DESIGNING CUSTOM RIGGING FOR ANY SITUATION!
2. POLAR FOCUS CAN PROVIDE P.E. STAMPED DRAWINGS IN ALL 50 STATES FOR OUR DESIGN WORK.

COPYRIGHT © 2015 Polar Focus, Inc.
POLAR FOCUS® is a Registered Trademark of Polar Focus, Inc.

Polar Focus, Inc.
20 Industrial Dr. E., Unit 2
South Deerfield, MA 01373
413-586-4444
www.polarfocus.com

DRAWN BY:
Matt Shutta May-19-2015

SCALE: n/a

Submittal H8036-5:
EAW QX Series; 1 Over 1, EAW U-Brackets, Sub Behind, TA

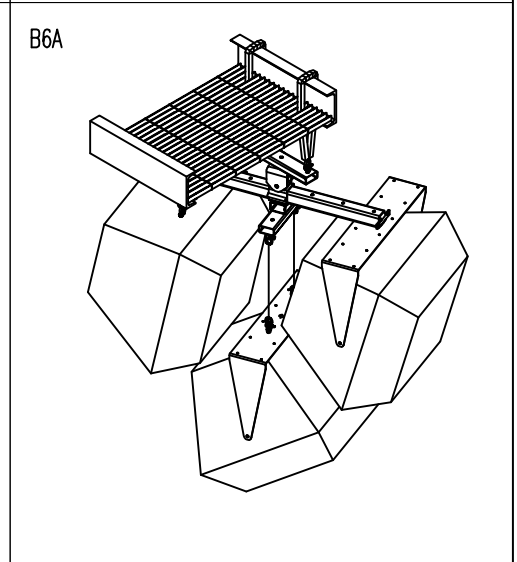
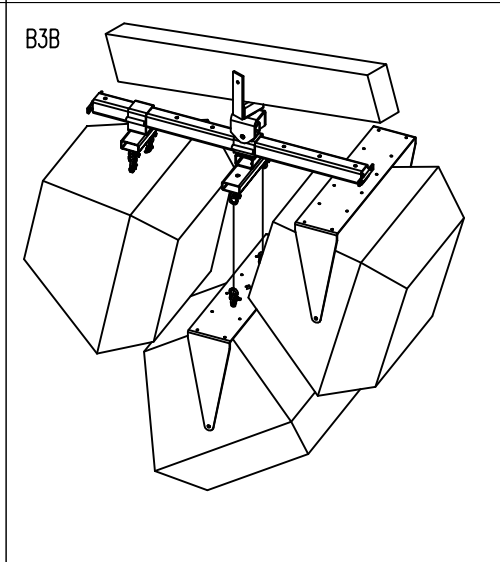
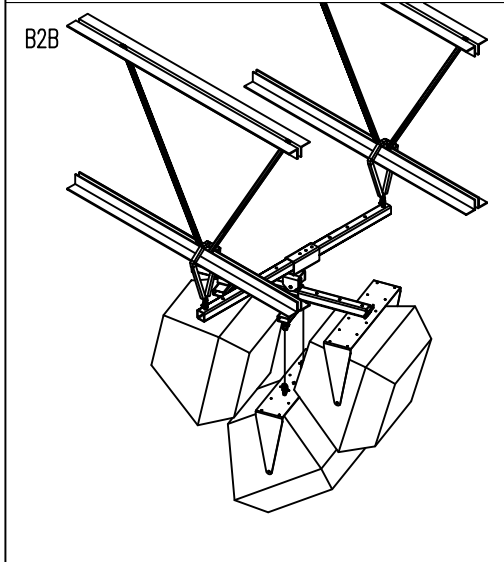
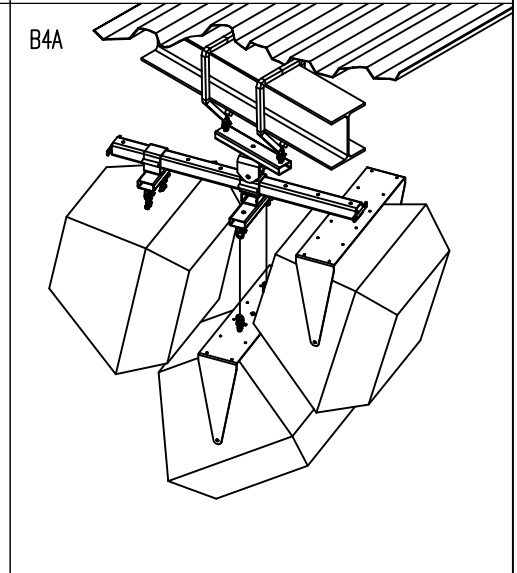
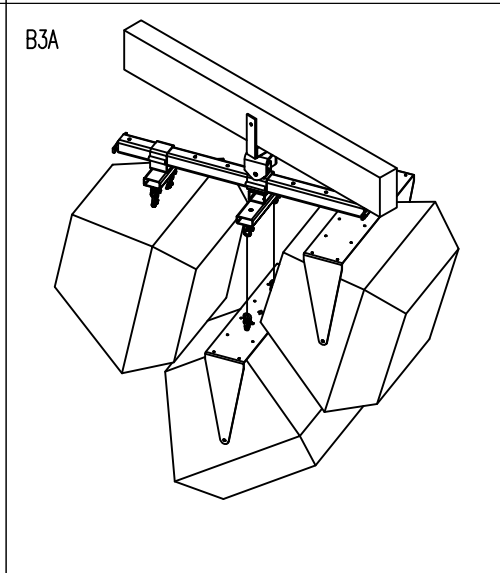
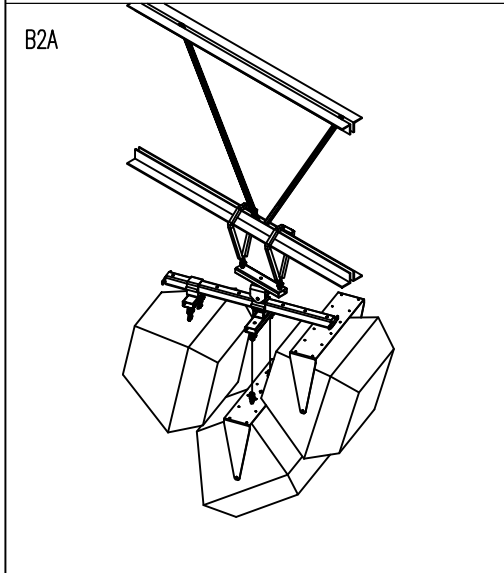
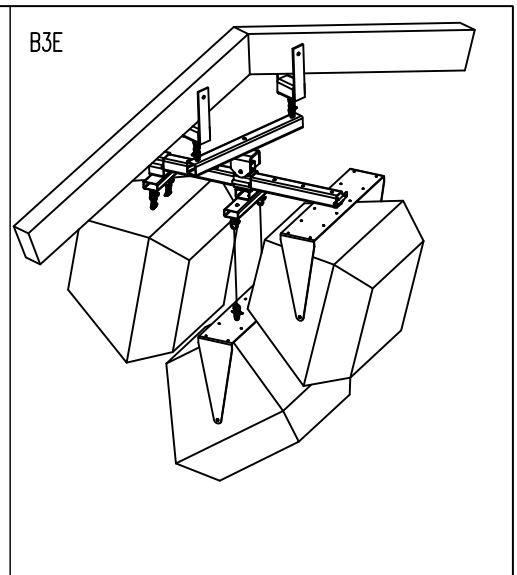
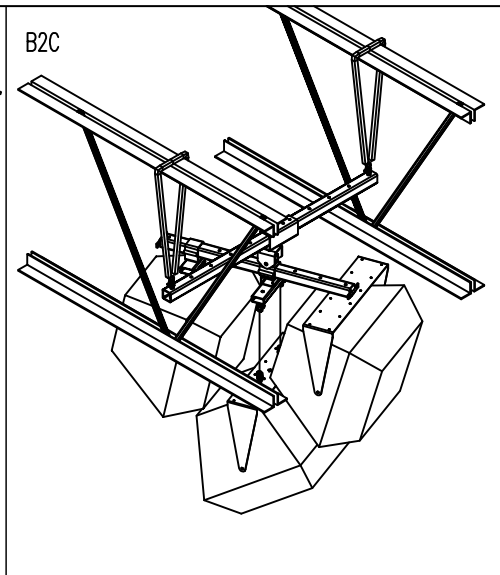
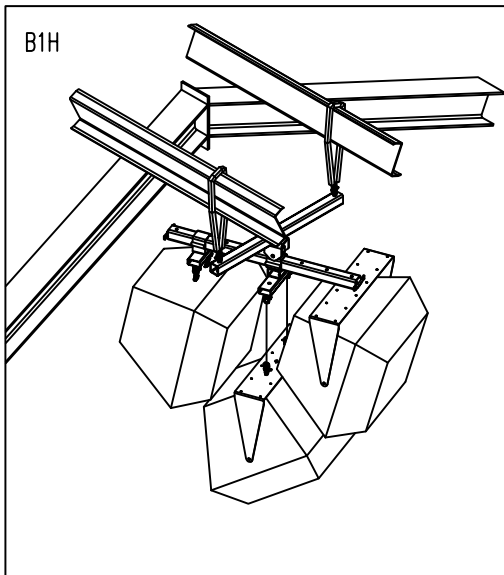
SAMPLE RIGGING CONFIGURATIONS

FILE: H8036-5.dwg

DWG. NO. H8036-5 S-001

REV

SIZE A SHEET 1 of 2



NOTES:

1. THIS DOCUMENT SHOWS A SAMPLE OF SOME COMMON RIGGING METHODS POLAR FOCUS CAN PROVIDE FOR YOUR EAW QX SERIES SPEAKERS. THIS IS ONLY A SUBSET OF STANDARD ROOF ATTACHMENT TECHNIQUES; IF YOU DO NOT SEE THE RIGGING CONFIGURATION THAT YOU NEED, PLEASE DO NOT HESITATE TO CALL US; WE EXCEL IN DESIGNING CUSTOM RIGGING FOR ANY SITUATION!
2. POLAR FOCUS CAN PROVIDE P.E. STAMPED DRAWINGS IN ALL 50 STATES FOR OUR DESIGN WORK.

Polar Focus, Inc.
20 Industrial Dr. E., Unit 2
South Deerfield, MA 01373
413-586-4444
www.polarfocus.com

DRAWN BY:
Matt Shutta May-19-2015

SCALE: per panel

Submittal H8036-5:

EAW QX Series; 1 Over 1, EAW U-Brackets, Sub Behind, TA

Four Views

FILE:

H8036-5.dwg

DWG. NO.

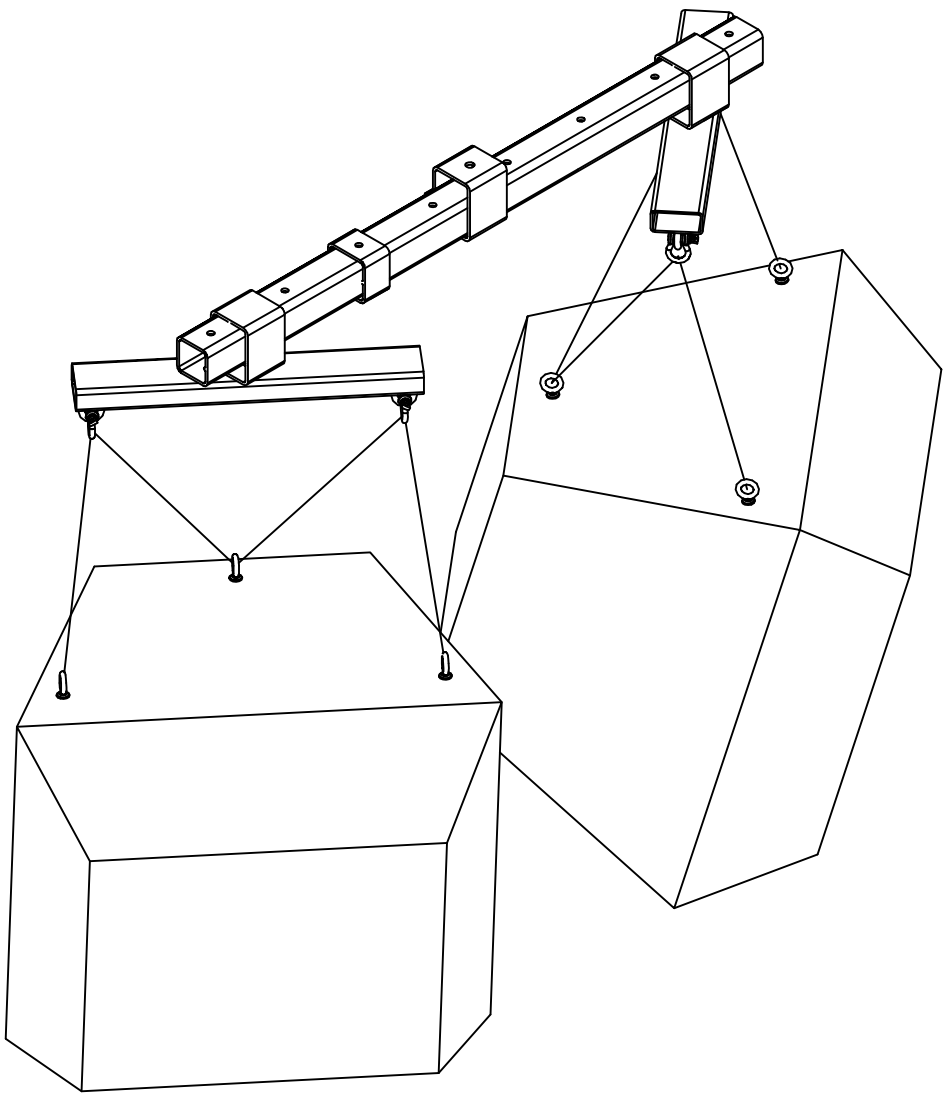
H8036-5 S-002

REV

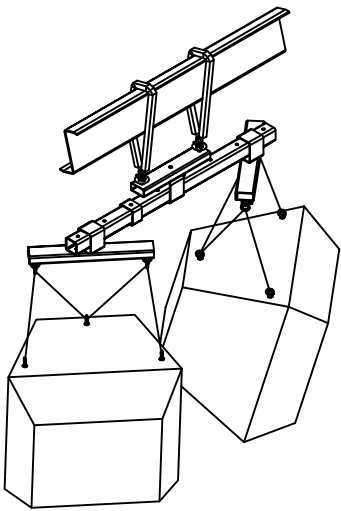
SIZE A

SHEET 2 of 2

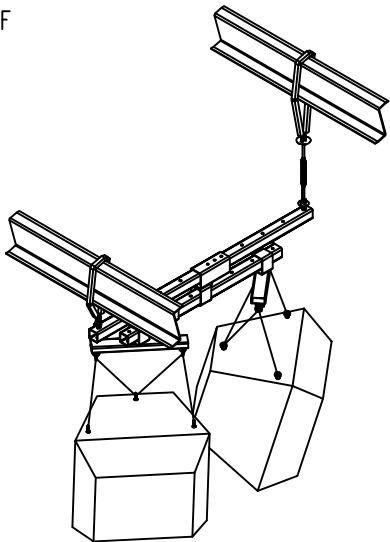
2 QX 5XX SERIES SPEAKERS SIDE BY SIDE WITH TILT CABLE KITS



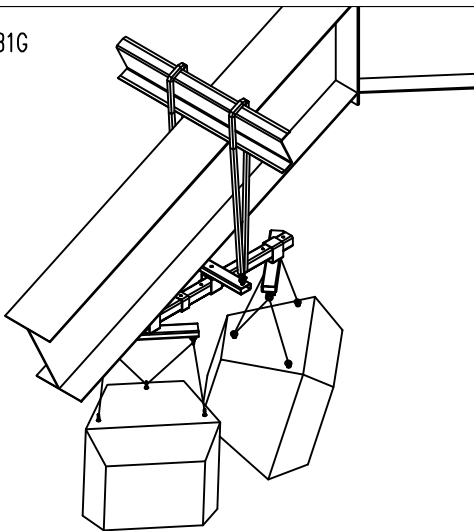
B1C



B1F



B1G



- NOTES:
1. THIS DOCUMENT SHOWS A SAMPLE OF SOME COMMON RIGGING METHODS POLAR FOCUS CAN PROVIDE FOR YOUR EAW QX SERIES SPEAKERS. THIS IS ONLY A SUBSET OF STANDARD ROOF ATTACHMENT TECHNIQUES; IF YOU DO NOT SEE THE RIGGING CONFIGURATION THAT YOU NEED, PLEASE DO NOT HESITATE TO CALL US; WE EXCEL IN DESIGNING CUSTOM RIGGING FOR ANY SITUATION!
 2. POLAR FOCUS CAN PROVIDE P.E. STAMPED DRAWINGS IN ALL 50 STATES FOR OUR DESIGN WORK.

COPYRIGHT © 2015 Polar Focus, Inc.
POLAR FOCUS® is a Registered Trademark of Polar Focus, Inc.

Polar Focus, Inc.
20 Industrial Dr. E., Unit 2
South Deerfield, MA 01373
413-586-4444
www.polarfocus.com

DRAWN BY:
Matt Shutta May-20-2015

SCALE: n/a

Submittal H8036-6:
EAW QX Series; Side by Side, With Tilt Cable Kits

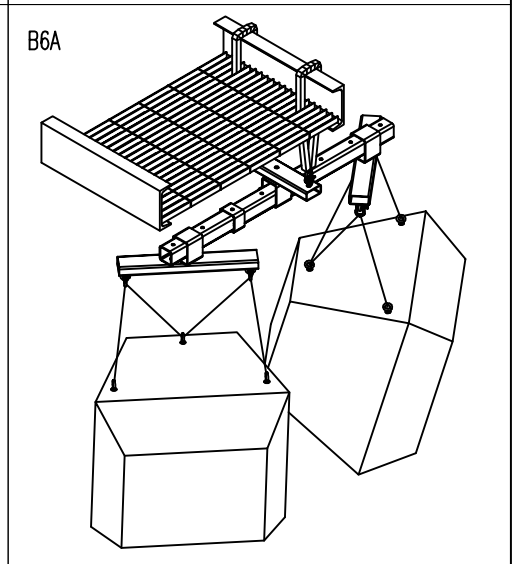
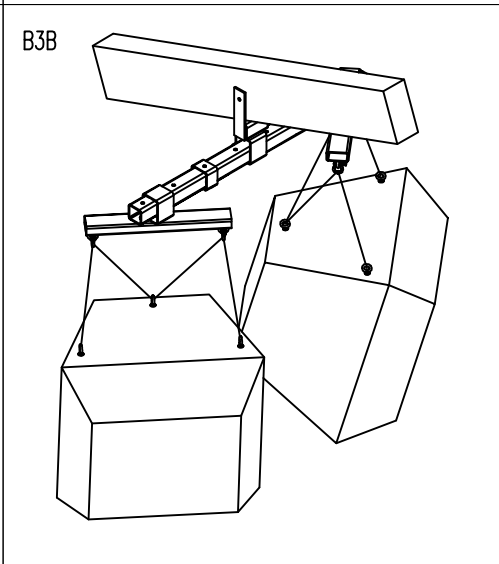
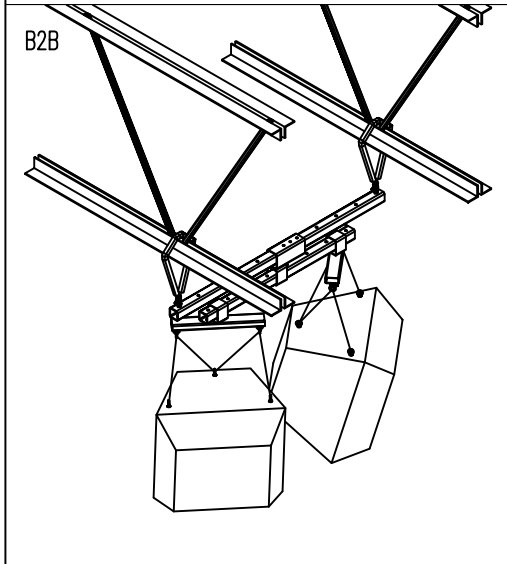
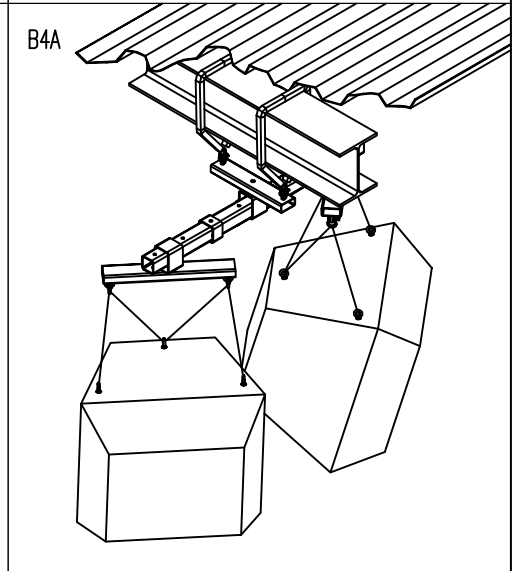
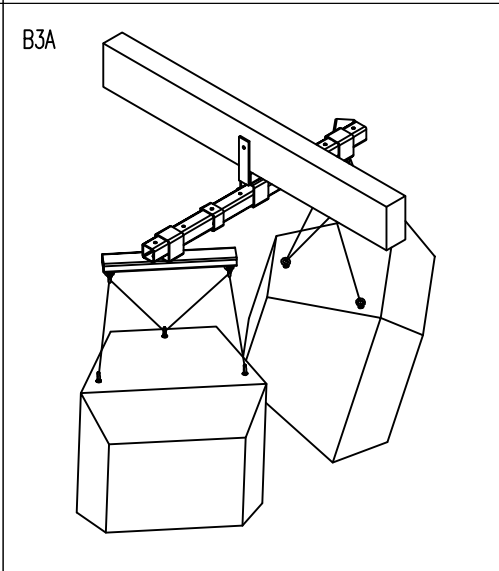
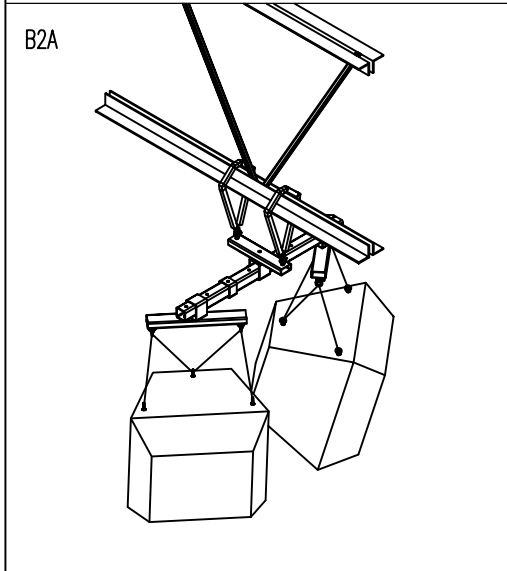
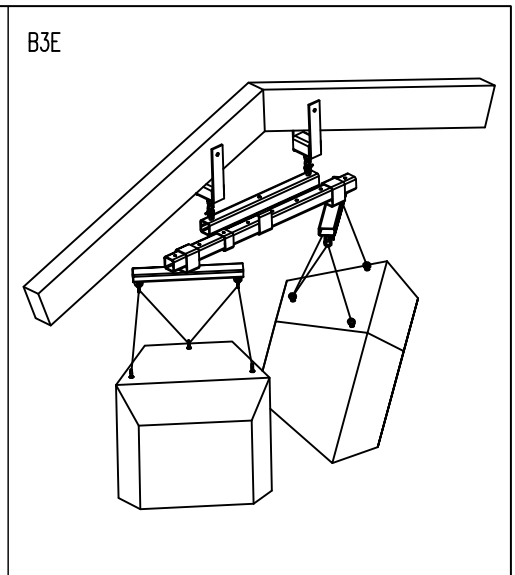
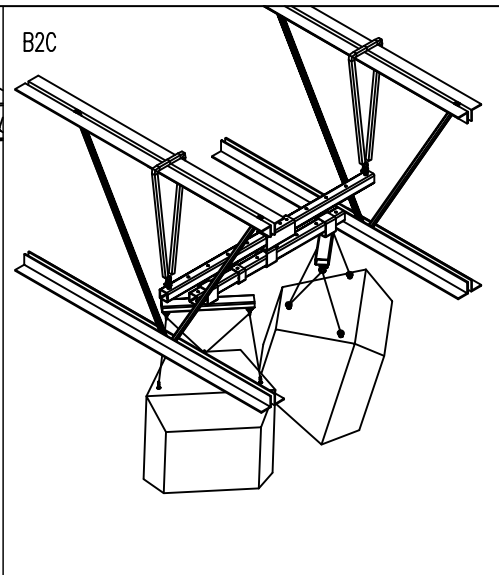
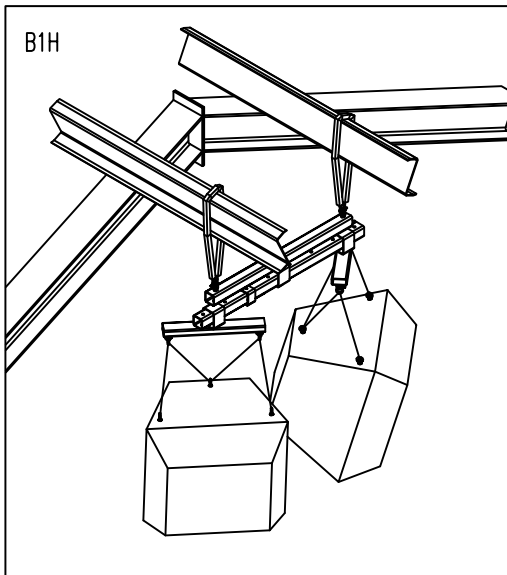
SAMPLE RIGGING CONFIGURATIONS

FILE: H8036-6.dwg

DWG. NO. H8036-6 S-001

REV

SIZE A SHEET 1 of 2



NOTES:

1. THIS DOCUMENT SHOWS A SAMPLE OF SOME COMMON RIGGING METHODS POLAR FOCUS CAN PROVIDE FOR YOUR EAW QX SERIES SPEAKERS. THIS IS ONLY A SUBSET OF STANDARD ROOF ATTACHMENT TECHNIQUES; IF YOU DO NOT SEE THE RIGGING CONFIGURATION THAT YOU NEED, PLEASE DO NOT HESITATE TO CALL US; WE EXCEL IN DESIGNING CUSTOM RIGGING FOR ANY SITUATION!
2. POLAR FOCUS CAN PROVIDE P.E. STAMPED DRAWINGS IN ALL 50 STATES FOR OUR DESIGN WORK.

Polar Focus, Inc.
20 Industrial Dr. E., Unit 2
South Deerfield, MA 01373
413-586-4444
www.polarfocus.com

DRAWN BY:
Matt Shutta May-20-2015

SCALE: per panel

Submittal H8036-6:

EAW QX Series; Side by Side, With Tilt Cable Kits

Four Views

FILE:

H8036-6.dwg

DWG. NO.

H8036-6 S-002

REV

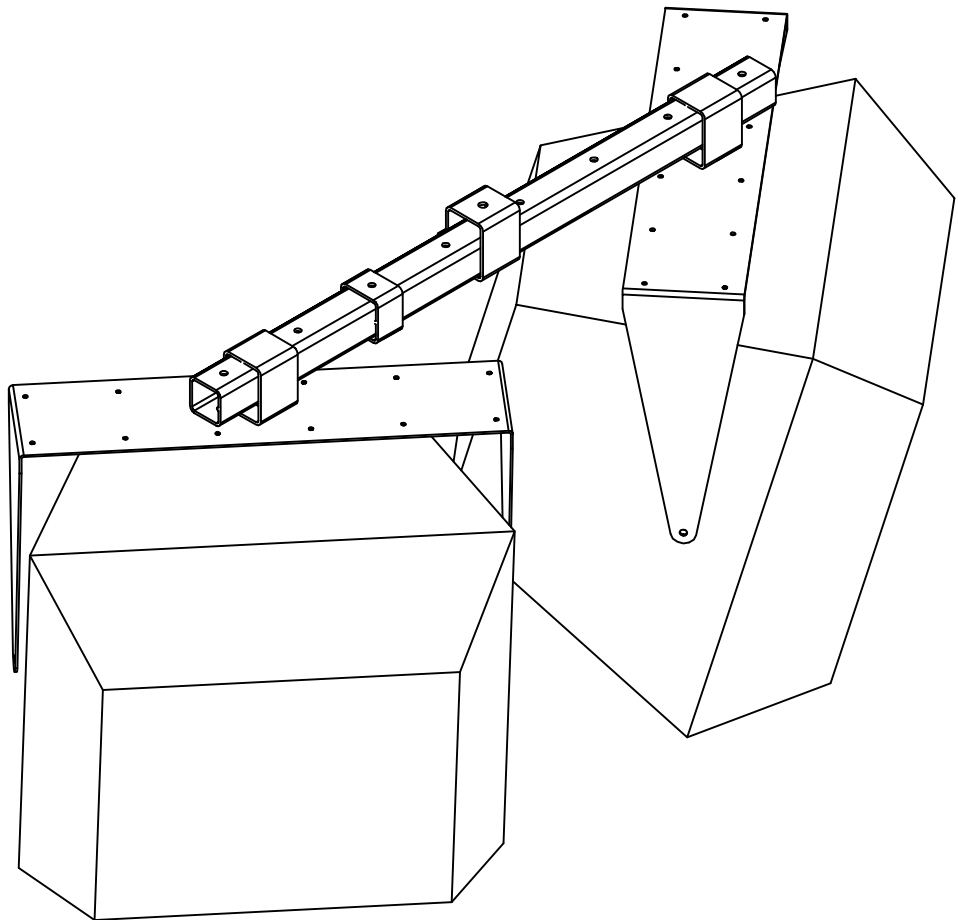
SIZE A

SHEET 2 of 2

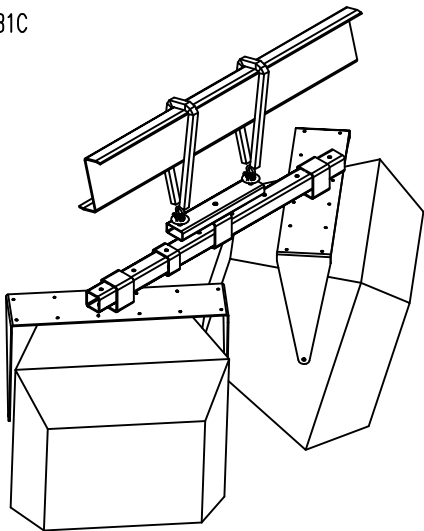
COPYRIGHT © 2015 Polar Focus, Inc.

POLAR FOCUS® is a Registered Trademark of Polar Focus, Inc.

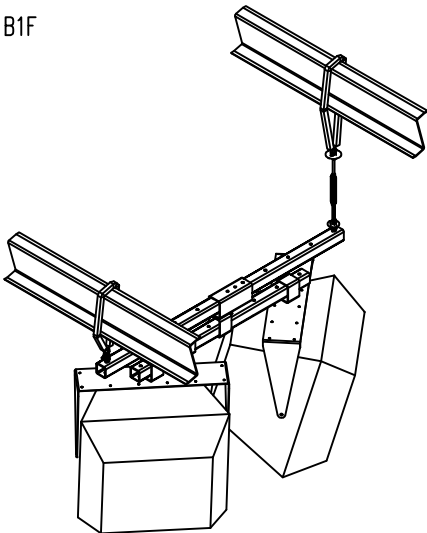
2 QX 5XX SERIES SPEAKERS SIDE BY SIDE WITH EAW U-BRACKETS



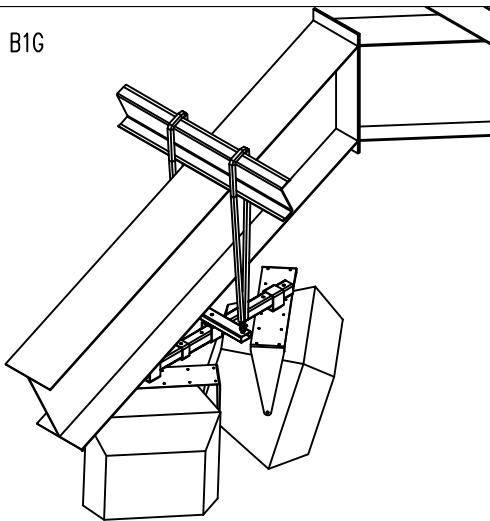
B1C



B1F



B1G



- NOTES:
1. THIS DOCUMENT SHOWS A SAMPLE OF SOME COMMON RIGGING METHODS POLAR FOCUS CAN PROVIDE FOR YOUR EAW QX SERIES SPEAKERS. THIS IS ONLY A SUBSET OF STANDARD ROOF ATTACHMENT TECHNIQUES; IF YOU DO NOT SEE THE RIGGING CONFIGURATION THAT YOU NEED, PLEASE DO NOT HESITATE TO CALL US; WE EXCEL IN DESIGNING CUSTOM RIGGING FOR ANY SITUATION!
 2. POLAR FOCUS CAN PROVIDE P.E. STAMPED DRAWINGS IN ALL 50 STATES FOR OUR DESIGN WORK.

COPYRIGHT © 2015 Polar Focus, Inc.
POLAR FOCUS® is a Registered Trademark of Polar Focus, Inc.

Polar Focus, Inc.
20 Industrial Dr. E., Unit 2
South Deerfield, MA 01373
413-586-4444
www.polarfocus.com

DRAWN BY:
Matt Shutta May-20-2015

SCALE: n/a

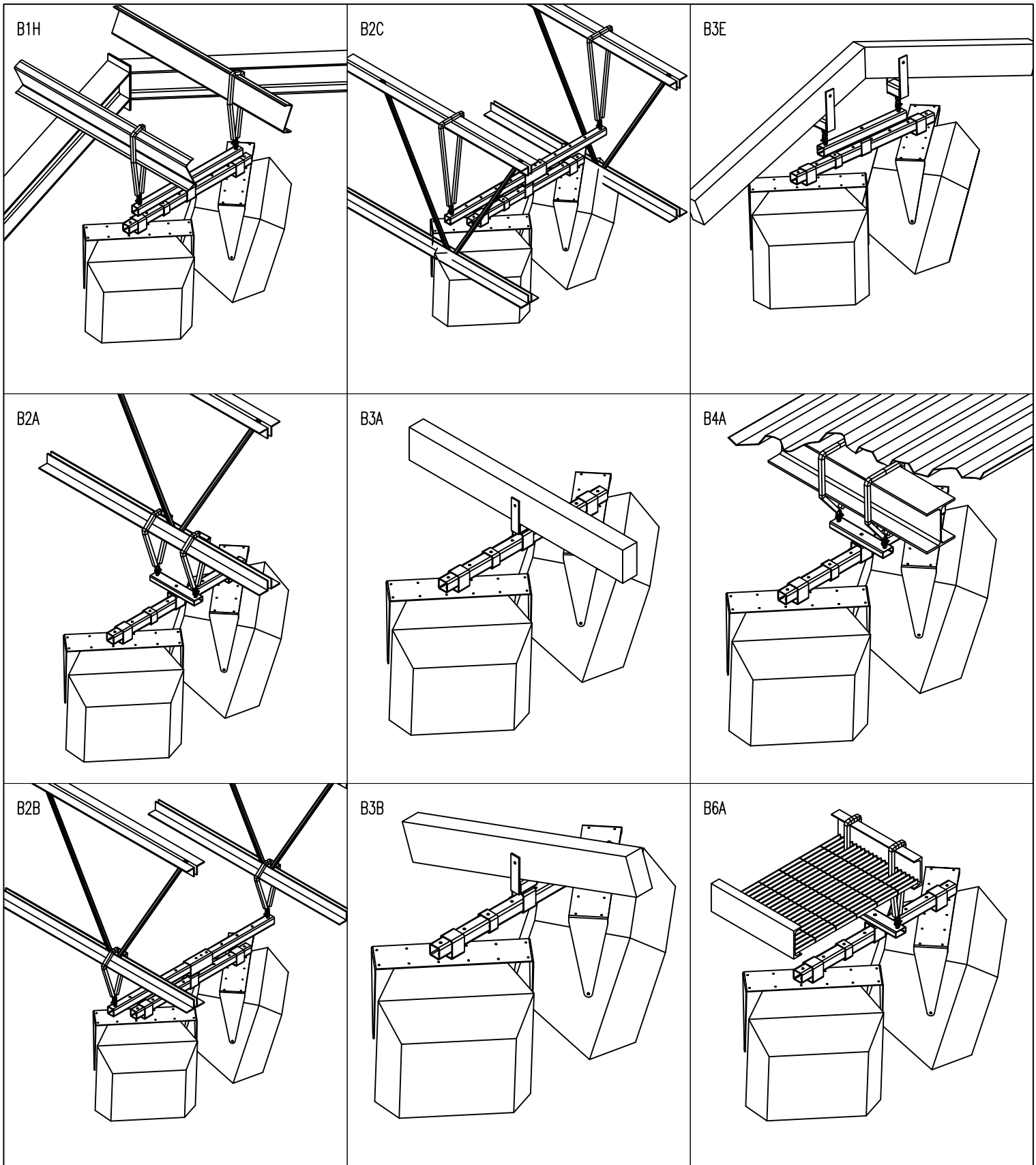
Submittal H8036-7:
EAW QX Series; Side by Side, With EAW U-Brackets

SAMPLE RIGGING CONFIGURATIONS

FILE: H8036-7.dwg

DWG. NO. H8036-7 S-001

REV SIZE A SHEET 1 of 2



NOTES:

1. THIS DOCUMENT SHOWS A SAMPLE OF SOME COMMON RIGGING METHODS POLAR FOCUS CAN PROVIDE FOR YOUR EAW QX SERIES SPEAKERS. THIS IS ONLY A SUBSET OF STANDARD ROOF ATTACHMENT TECHNIQUES; IF YOU DO NOT SEE THE RIGGING CONFIGURATION THAT YOU NEED, PLEASE DO NOT HESITATE TO CALL US; WE EXCEL IN DESIGNING CUSTOM RIGGING FOR ANY SITUATION!
2. POLAR FOCUS CAN PROVIDE P.E. STAMPED DRAWINGS IN ALL 50 STATES FOR OUR DESIGN WORK.

Polar Focus, Inc.
20 Industrial Dr. E., Unit 2
South Deerfield, MA 01373
413-586-4444
www.polarfocus.com

DRAWN BY:
Matt Shutta May-20-2015

SCALE: per panel

Submittal H8036-7:

EAW QX Series; Side by Side, With EAW U-Brackets

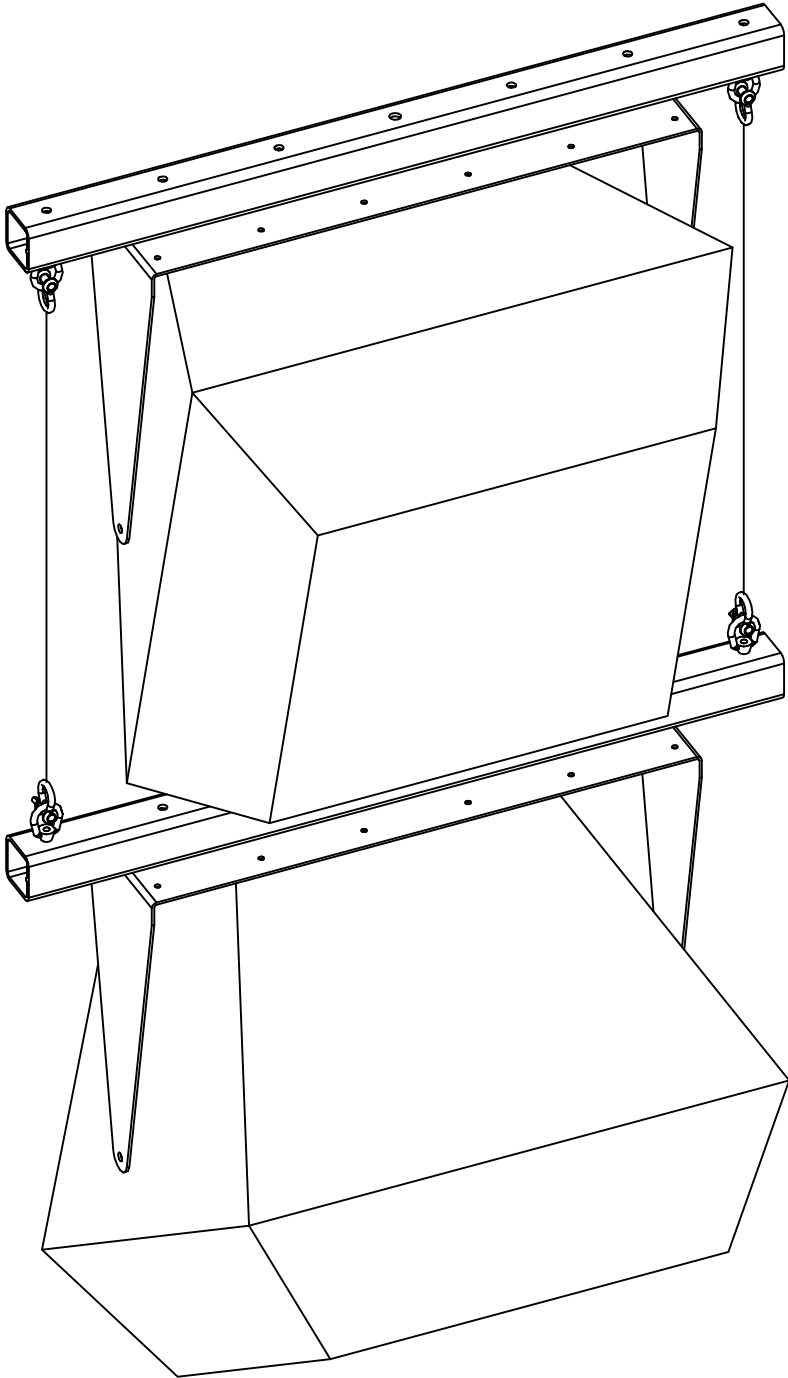
Four Views

FILE: H8036-7.dwg

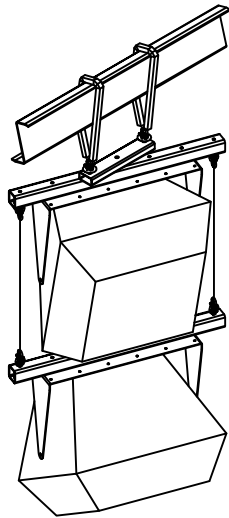
DWG. NO. H8036-7 S-002

REV SIZE A SHEET 2 of 2

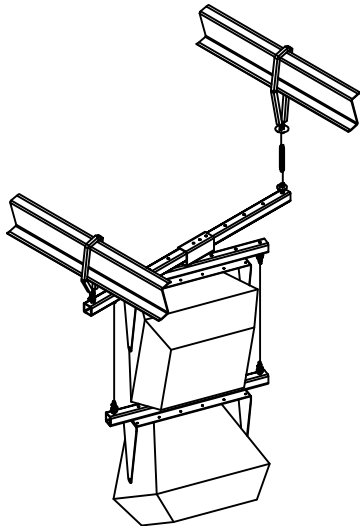
2 QX 5XX SERIES SPEAKERS ONE OVER ANOTHER WITH EAW U-BRACKETS & NO MECHANICAL TIME ALIGNMENT



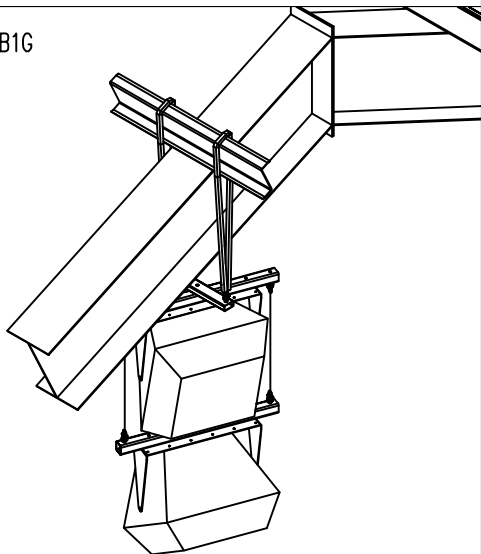
B1C



B1F



B1G



- NOTES:
1. THIS DOCUMENT SHOWS A SAMPLE OF SOME COMMON RIGGING METHODS POLAR FOCUS CAN PROVIDE FOR YOUR EAW QX SERIES SPEAKERS. THIS IS ONLY A SUBSET OF STANDARD ROOF ATTACHMENT TECHNIQUES; IF YOU DO NOT SEE THE RIGGING CONFIGURATION THAT YOU NEED, PLEASE DO NOT HESITATE TO CALL US; WE EXCEL IN DESIGNING CUSTOM RIGGING FOR ANY SITUATION!
 2. POLAR FOCUS CAN PROVIDE P.E. STAMPED DRAWINGS IN ALL 50 STATES FOR OUR DESIGN WORK.

COPYRIGHT © 2015 Polar Focus, Inc.
POLAR FOCUS® is a Registered Trademark of Polar Focus, Inc.

Polar Focus, Inc.
20 Industrial Dr. E., Unit 2
South Deerfield, MA 01373
413-586-4444
www.polarfocus.com

DRAWN BY:
Matt Shutta May-20-2015

SCALE: n/a

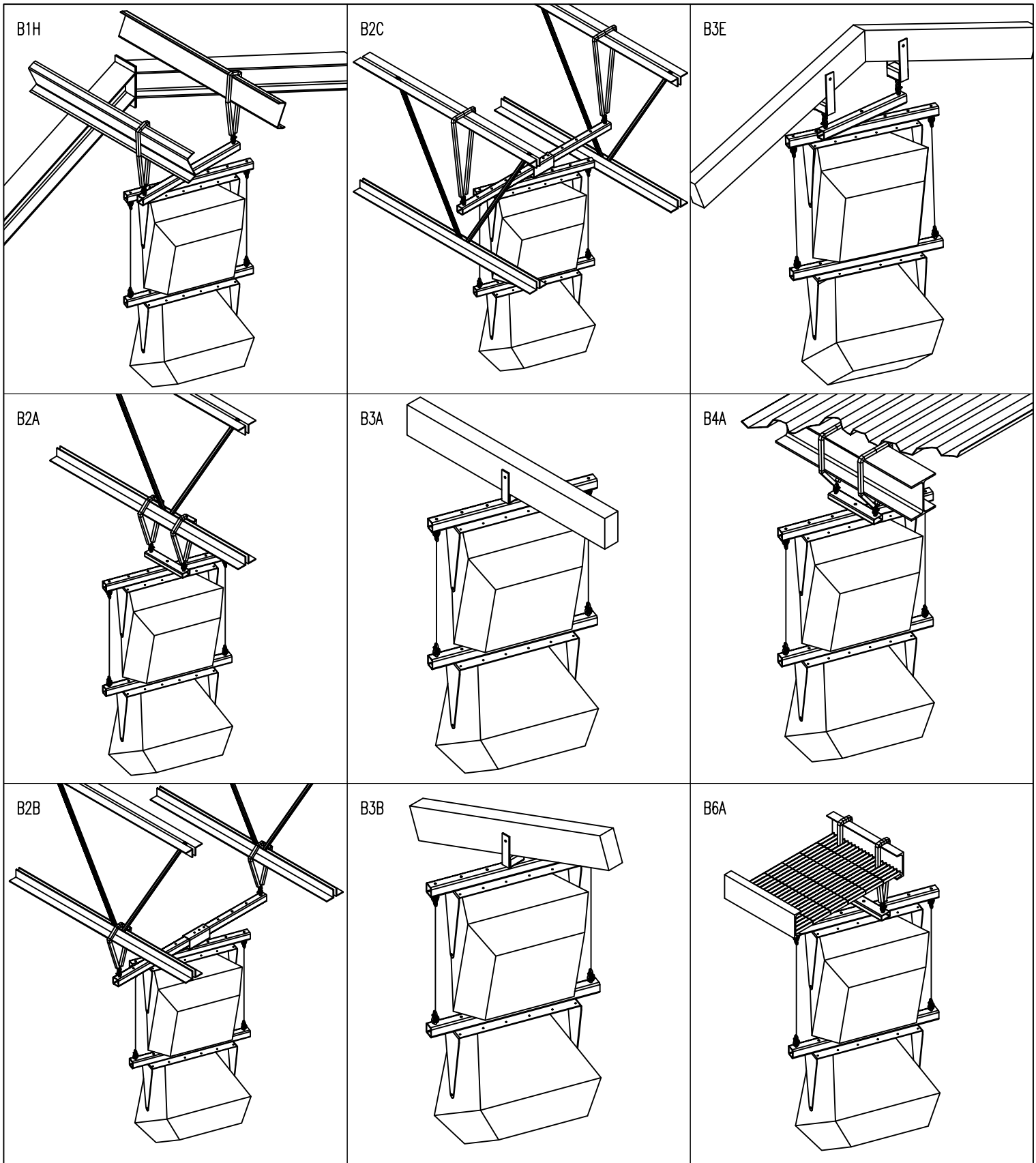
Submittal H8036-8:
EAW QX Series; 1 Over 1, EAW U-Brackets, No TA

SAMPLE RIGGING CONFIGURATIONS

FILE: H8036-8.dwg

DWG. NO. H8036-8 S-001

REV SIZE A SHEET 1 of 2



NOTES:

1. THIS DOCUMENT SHOWS A SAMPLE OF SOME COMMON RIGGING METHODS POLAR FOCUS CAN PROVIDE FOR YOUR EAW QX SERIES SPEAKERS. THIS IS ONLY A SUBSET OF STANDARD ROOF ATTACHMENT TECHNIQUES; IF YOU DO NOT SEE THE RIGGING CONFIGURATION THAT YOU NEED, PLEASE DO NOT HESITATE TO CALL US; WE EXCEL IN DESIGNING CUSTOM RIGGING FOR ANY SITUATION!
2. POLAR FOCUS CAN PROVIDE P.E. STAMPED DRAWINGS IN ALL 50 STATES FOR OUR DESIGN WORK.

Polar Focus, Inc.
20 Industrial Dr. E., Unit 2
South Deerfield, MA 01373
413-586-4444
www.polarfocus.com

DRAWN BY:
Matt Shutta May-20-2015

SCALE: per panel

Submittal H8036-8:

EAW QX Series; 1 Over 1, EAW U-Brackets, No TA

Four Views

FILE:

H8036-8.dwg

DWG. NO.

H8036-8 S-002

REV

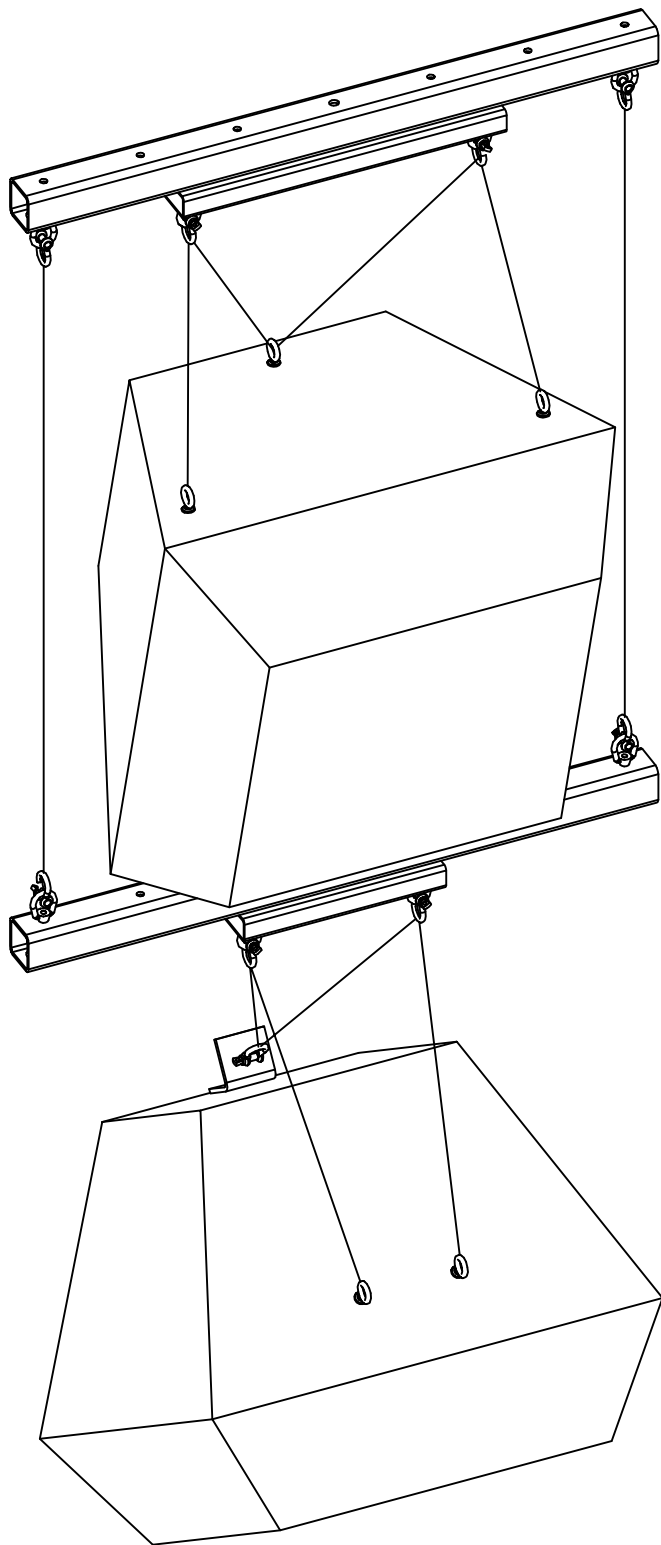
SIZE A

SHEET 2 of 2

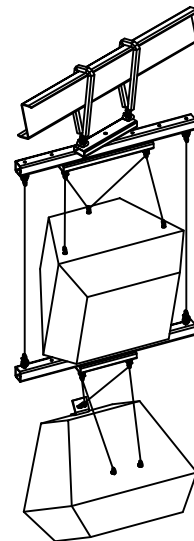
COPYRIGHT © 2015 Polar Focus, Inc.

POLAR FOCUS® is a Registered Trademark of Polar Focus, Inc.

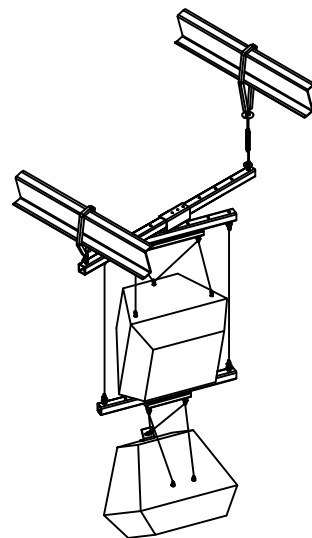
2 QX 5XX SERIES SPEAKERS ONE OVER ANOTHER WITH TILT CABLE KITS & NO MECHANICAL TIME ALIGNMENT



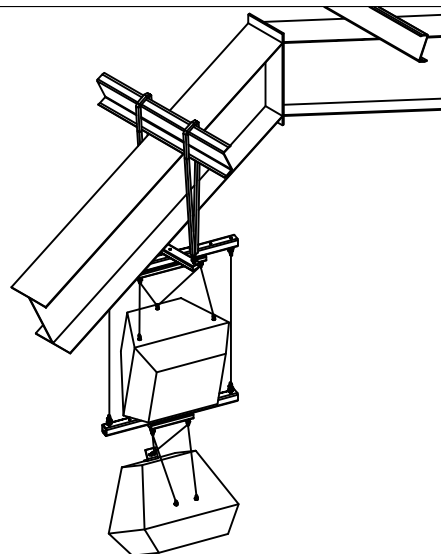
B1C



B1F



B1G



NOTES:
1. THIS DOCUMENT SHOWS A SAMPLE OF SOME COMMON RIGGING METHODS POLAR FOCUS CAN PROVIDE FOR YOUR EAW QX SERIES SPEAKERS. THIS IS ONLY A SUBSET OF STANDARD ROOF ATTACHMENT TECHNIQUES; IF YOU DO NOT SEE THE RIGGING CONFIGURATION THAT YOU NEED, PLEASE DO NOT HESITATE TO CALL US; WE EXCEL IN DESIGNING CUSTOM RIGGING FOR ANY SITUATION!
2. POLAR FOCUS CAN PROVIDE P.E. STAMPED DRAWINGS IN ALL 50 STATES FOR OUR DESIGN WORK.

COPYRIGHT © 2015 Polar Focus, Inc.
POLAR FOCUS® is a Registered Trademark of Polar Focus, Inc.

Polar Focus, Inc.
20 Industrial Dr. E., Unit 2
South Deerfield, MA 01373
413-586-4444
www.polarfocus.com

DRAWN BY:
Matt Shutta May-20-2015

SCALE: n/a

Submittal H8036-9:
EAW QX Series; 1 Over 1, Tilt Cable Kits, No TA

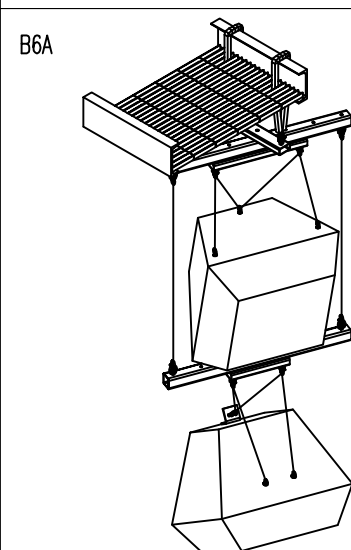
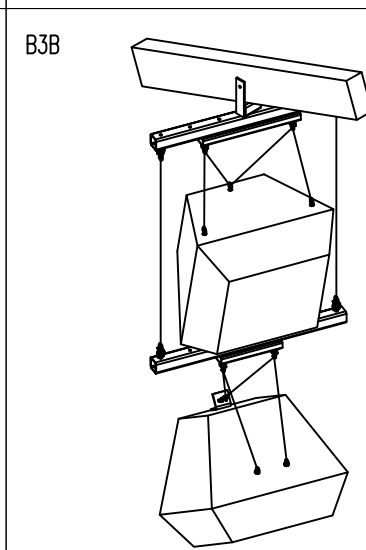
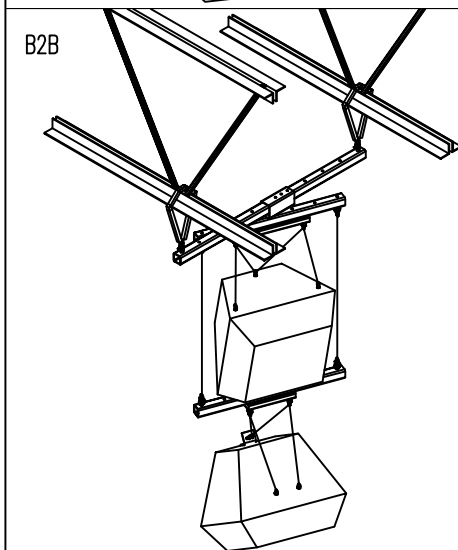
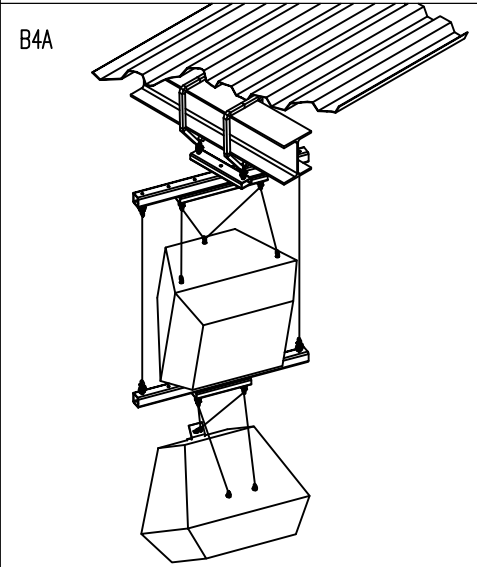
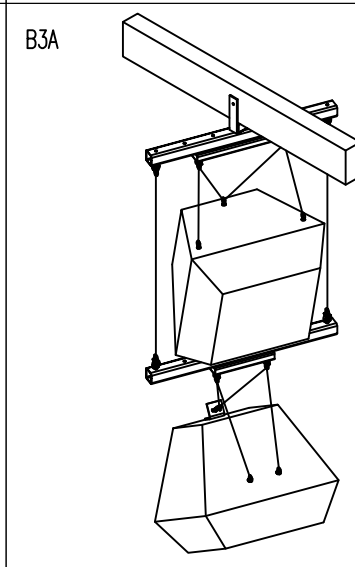
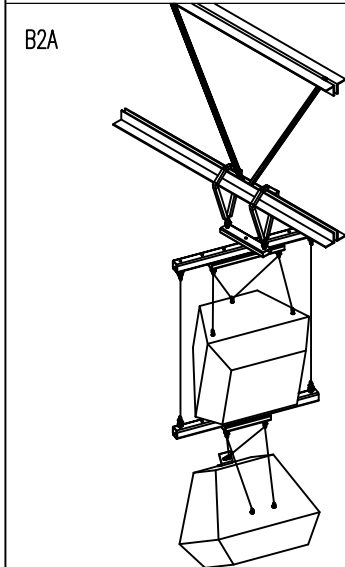
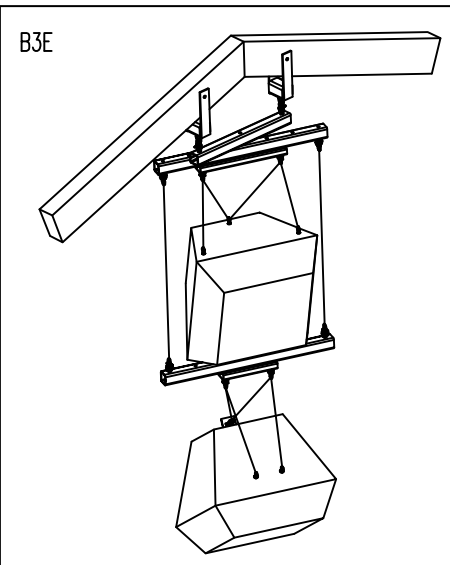
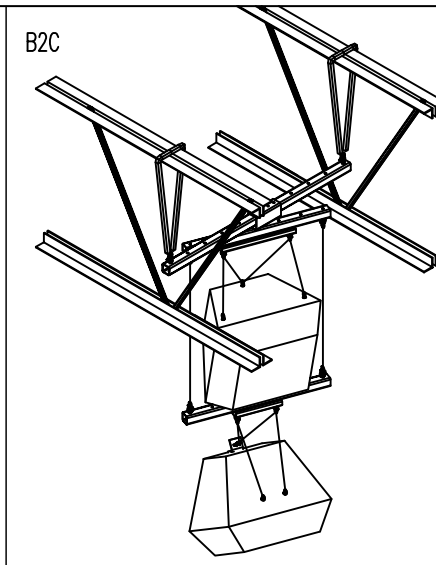
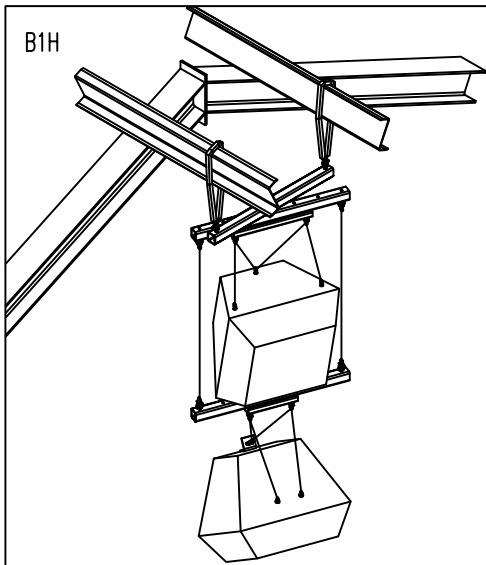
SAMPLE RIGGING CONFIGURATIONS

FILE: H8036-9.dwg

DWG. NO. H8036-9 S-001

REV

SIZE A SHEET 1 of 2



NOTES:

1. THIS DOCUMENT SHOWS A SAMPLE OF SOME COMMON RIGGING METHODS POLAR FOCUS CAN PROVIDE FOR YOUR EAW QX SERIES SPEAKERS. THIS IS ONLY A SUBSET OF STANDARD ROOF ATTACHMENT TECHNIQUES; IF YOU DO NOT SEE THE RIGGING CONFIGURATION THAT YOU NEED, PLEASE DO NOT HESITATE TO CALL US; WE EXCEL IN DESIGNING CUSTOM RIGGING FOR ANY SITUATION!
2. POLAR FOCUS CAN PROVIDE P.E. STAMPED DRAWINGS IN ALL 50 STATES FOR OUR DESIGN WORK.

Polar Focus, Inc.
20 Industrial Dr. E., Unit 2
South Deerfield, MA 01373
413-586-4444
www.polarfocus.com

DRAWN BY:
Matt Shutta May-20-2015

SCALE: per panel

Submittal H8036-9:

EAW QX Series; 1 Over 1, Tilt Cable Kits, No TA

Four Views

FILE:

H8036-9.dwg

DWG. NO.

H8036-9 S-002

REV

SIZE A

SHEET 2 of 2