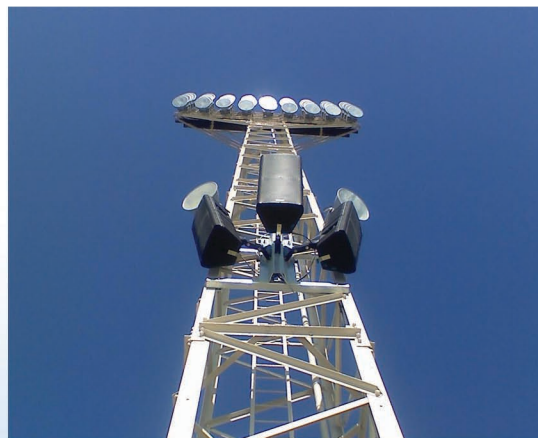


Polar Focus Provides Custom Pole Mount Interface

Six EV Sx600's were recently installed at Welcome Stadium in Dayton, Ohio. Two clusters of three boxes, mounted from towers behind the press boxes, use EV SuperSAM brackets to grip the speakers. The question for Tony Klarmann, Senior AV Systems Project Engineer for Copp Systems of Dayton, Ohio, was what would attach the brackets to the towers. For an answer, he called Polar Focus, which provided a custom made mounting interface for attachment to the towers. Polar Focus designs and manufactures professionally engineered audio mounting and rigging hardware which provides traction where the audio rigging hardware meets the "how do we actually do that?" road.



Here's what Tony had to say about the service he received from Polar Focus:

"I very much appreciate the patience and efforts by everyone on your staff. That's what makes a company great and brings back future business. Seems to be forgotten by so many in the world today, but your guys are the absolute best in service, support, and final product. Thanks!!!"

www.polarfocus.com