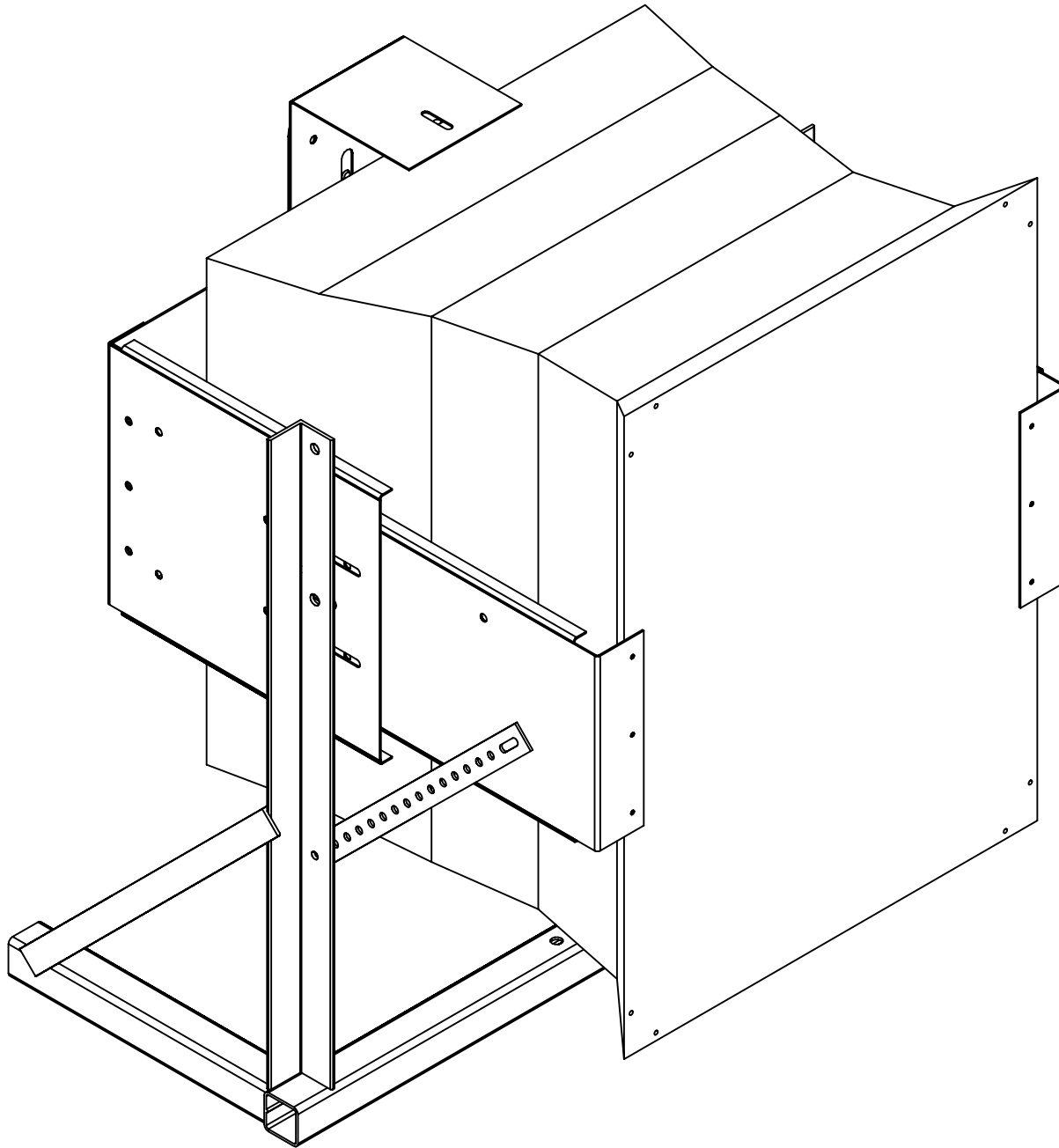
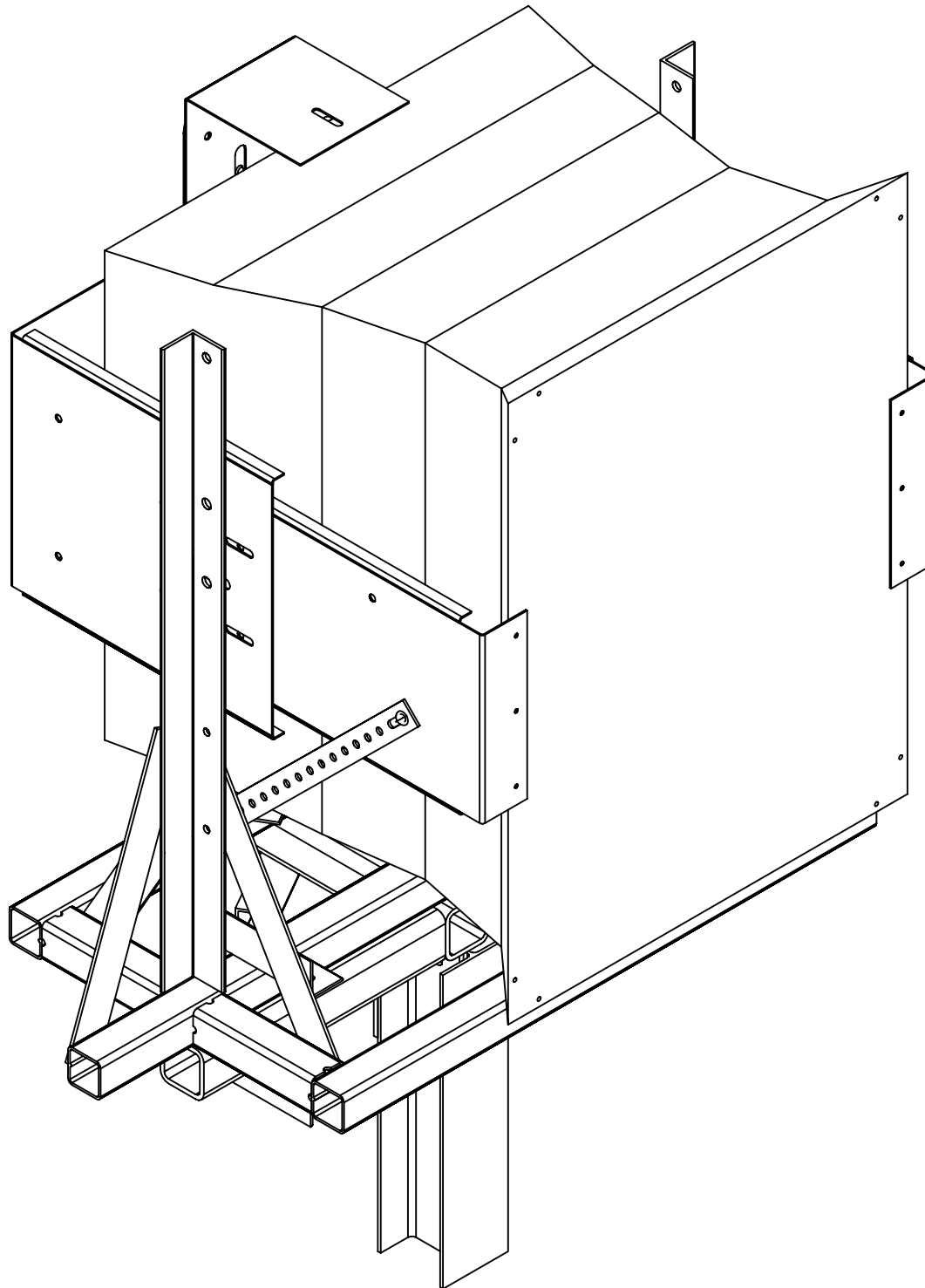


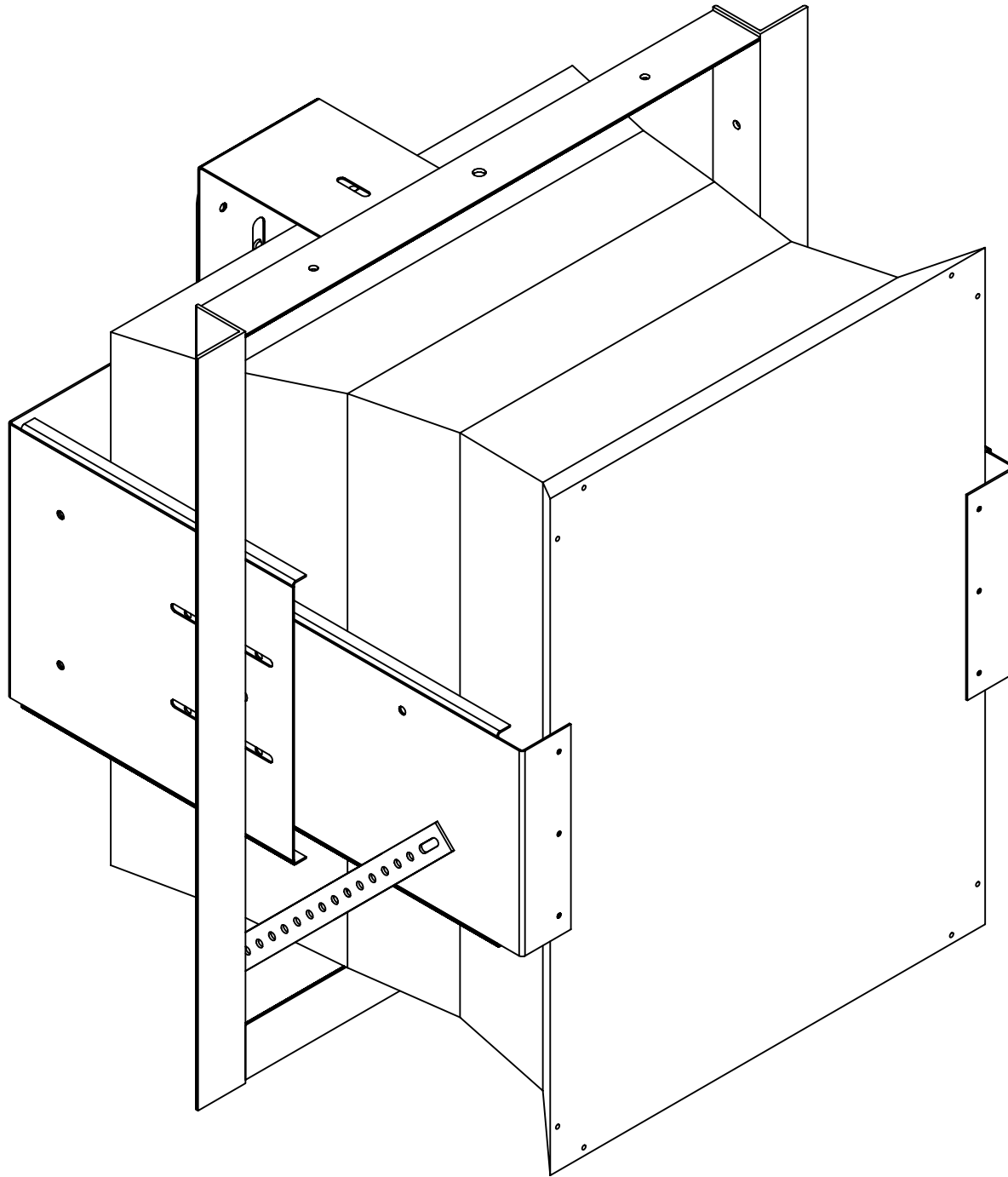
R6 Speaker Shown with handling frame. The handling frame is the root of Polar Focus' R6 Rigging options. The handling frame gives tilt adjustment to the R6, and can expand or contract to fit the geometry of the fiberglass loudspeaker exterior.



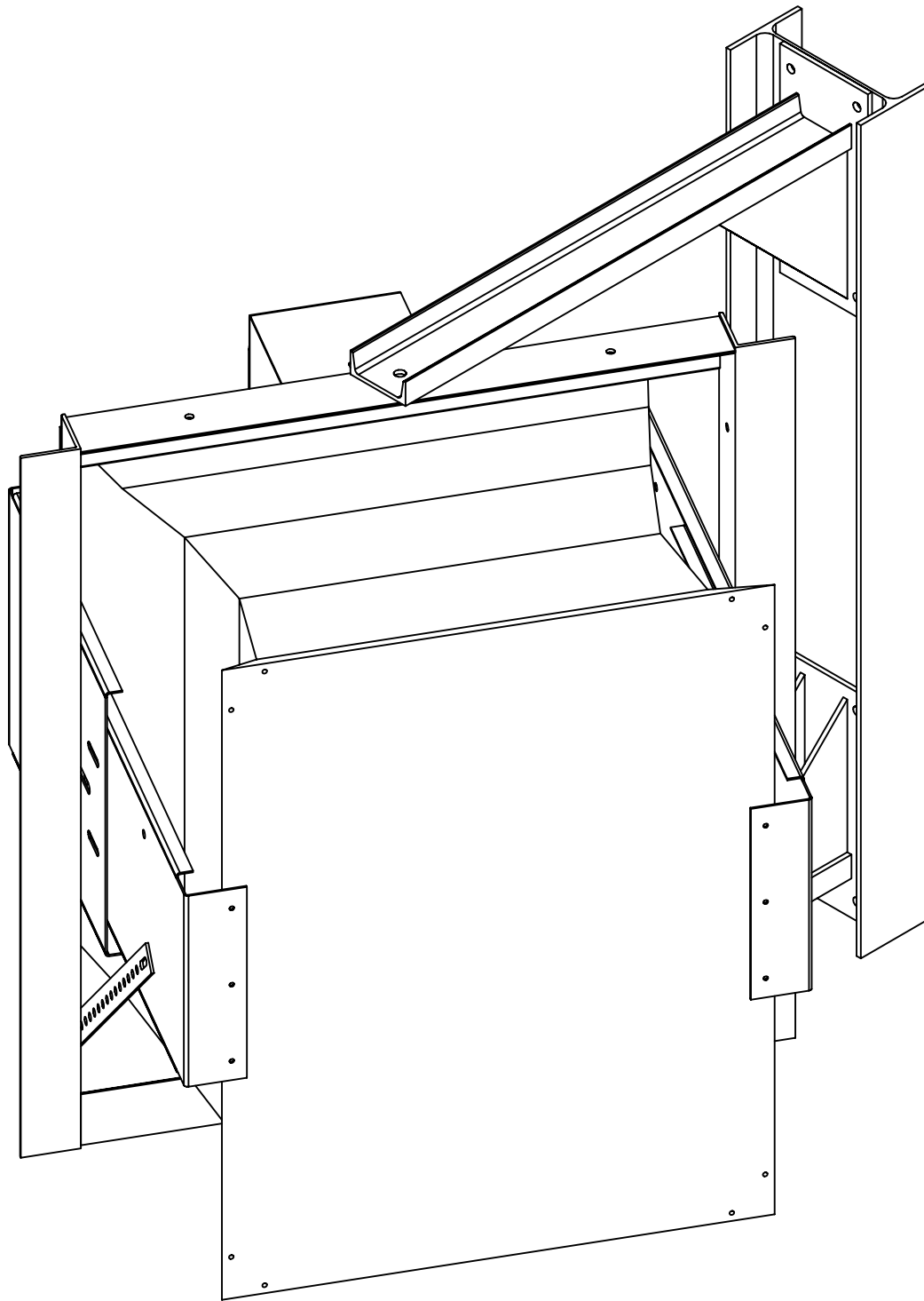
R6 shown with handling frame and "turrett" mount right side up. Turret mount can be adapted to many different structures with integrated pan adjustment, including mounted upside down under a roof structure.



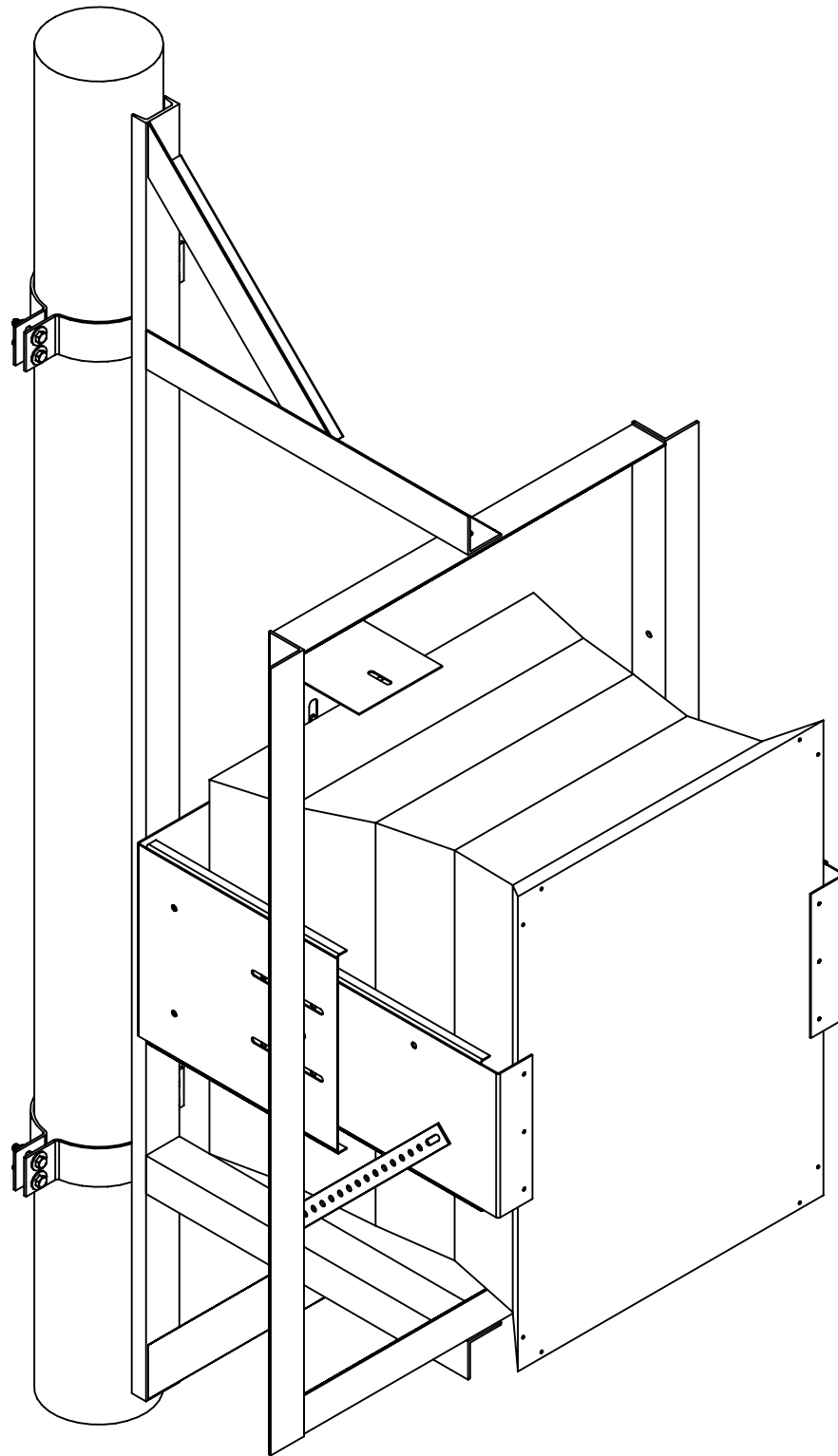
R6 shown with handling frame, modified turrett mount, and custom clamp attaching to the top of a vertical W-Beam. Pan and tilt adjustment is integrated and lockbars hold angles.



R6 shown with handling frame and gimble frame. Handling frame gives tilt adjustment, gimble frame gives pan adjustment. Gimble frame can be adapted to many different structures.



R6 shown with handling frame and gimble frame mounted beside a vertical W-Beam.



R6 shown with
handling frame and
gimble frame mounted
to a vertical tapered
pole.